



Goodman Products Catalog



Air Conditioning & Heating

Contents

Split System Air Conditioners

CLQ	14 SEER	2
CLT	13 SEER	3
CRT	13 SEER	4
CLJ	12 SEER	5
CKL	10 SEER	6

Through-the-Wall Air Conditioners

TWC	10 SEER	7
-----	---------	---

Split System Heat Pumps

CPLT	13 SEER	8
CPRT	13 SEER	9
CPLJ	12 SEER	10
CPL	10 SEER	11

Gas Furnaces

GMV9/GCV9	93% AFUE	12
GMS9/GCS9	93% AFUE	13
GMV8	80% AFUE	14
GMS8	80% AFUE	15
GDS8	80% AFUE	16
GHS8	80% AFUE	17

Packaged Air Conditioners

PCKJ	12 SEER	18
PCK	10 SEER	19
PCC Commercial		20

Packaged Heat Pumps

PHKJ	12 SEER	21
PHK	10 SEER	21

Packaged Gas/Electric

GPG12	12 SEER	23
GPG10	10 SEER	24
PGC Commercial		25

Air Handlers

AEPT	26
ARPT/ARPF	27
ARUF	28
AR Commercial	29
AWB	30
AC	31
AH	32
ACHP	33

Coils

CAUF	34
CAPF	35
CHPF	36
H	37

Indoor Air Quality

GHEPA/GDMHEPA	38
GSAS	39
G1EAC	40
GMU	41
HUM	42
HRV/ERV	43
UVX	44

Quietflex® – Flex Duct

“Rip Stop” Silver Jacket	45
UV-Inhibited Black Jacket	46
Mobile Home-Approved	47
Uninsulated Flex Duct	48

Accessories

Split System Air Conditioners and Heat Pumps	49
Gas Furnaces	49
Split System Thermostats	50
Packaged Air Conditioners and Heat Pumps	50
GPG12 and GPG10 Packaged Gas/Electric Units	51
PCC and PGC Commercial Packaged Units	51
Air Handlers	52
Coils	52



Thank goodness for Goodman.™

CLQ Series

14 SEER
2 to 5 Ton



The Goodman® CLQ Air Conditioner features an attractive louvered metal guard that protects the coil from damage and strengthens the unit. Designed for ground-level or rooftop mount, the raised base pan elevates the unit above the slab for excellent water drainage. The polyester powder-paint finish provides premium durability and improved UV protection.

- High-efficiency scroll compressor
- High-efficiency copper tube/aluminum fin coil
- Quiet condenser fan system includes an 8-pole, 850-RPM motor, 4-bladed fan and wire discharge grille
- High-quality sound blanket diminishes compressor operating sound
- R-22 refrigerant-charged for 15' of refrigerant lines
- High-capacity, steel-cased liquid line filter drier
- Brass liquid and suction service valves mounted at a 45° angle with sweat connections and service ports
- Heavy-gauge G-90 galvanized-steel cabinet with appliance-quality polyester powder-paint finish with 500-hour salt-spray approval
- Attractive Architectural Gray paint finish



Model	Nominal Cooling Capacity (BTUH)	Voltage-Phase	Maximum Overcurrent Device (amps)	Dimensions W x D x H	Service Valve		Shipping Weight (pounds)
					Liquid	Suction	
CLQ24-1B	23,000	208/230-1	20	29" x 29" x 31½"	3/8"	3/4"	206
CLQ30-1B	29,000	208/230-1	30	29" x 29" x 31½"	3/8"	3/4"	250
CLQ36-1B	35,000	208/230-1	30	29" x 29" x 39"	3/8"	7/8"	260
CLQ42-1B	41,000	208/230-1	40	35½" x 35½" x 31½"	3/8"	7/8"	269
CLQ48-1B	45,000	208/230-1	50	35½" x 35½" x 36½"	3/8"	7/8"	313
CLQ60-1B	55,000	208/230-1	50	35½" x 35½" x 41½"	3/8"	7/8"	337

CLT Series

13 SEER
2 to 5 Ton



The Goodman® CLT Air Conditioner features an attractive louvered metal guard that protects the coil from damage and strengthens the unit. Designed for ground-level or rooftop mount, the raised base pan elevates the unit above the slab for excellent water drainage. The polyester powder-paint finish provides premium durability and improved UV protection.

- High-efficiency scroll compressor
- High-efficiency copper tube/aluminum fin coil
- Quiet condenser fan system includes an 8-pole, 850-RPM motor, 4-bladed fan and wire discharge grille
- High-quality sound blanket diminishes compressor operating sound
- R-22 refrigerant-charged for 15' of refrigerant lines
- High-capacity, steel-cased liquid line filter drier
- Brass liquid and suction service valves mounted at a 45° angle with sweat connections and service ports
- Heavy-gauge G-90 galvanized-steel cabinet with appliance-quality polyester powder-paint finish with 500-hour salt-spray approval
- Attractive Architectural Gray paint finish



Model	Nominal Cooling Capacity (BTUH)	Voltage-Phase	Maximum Overcurrent Device (amps)	Dimensions W x D x H	Service Valve		Shipping Weight (pounds)
					Liquid	Suction	
CLT24-1B	22,400	208/230-1	20	29" x 29" x 26½"	3/8"	3/4"	173
CLT30-1B	28,000	208/230-1	20	29" x 29" x 31½"	3/8"	3/4"	208
CLT36-1B	36,000	208/230-1	30	29" x 29" x 31½"	3/8"	3/4"	209
CLT42-1B	41,000	208/230-1	30	29" x 29" x 39"	3/8"	7/8"	258
CLT48-1B	45,000	208/230-1	40	29" x 29" x 41½"	3/8"	7/8"	270
CLT60-1B	53,000	208/230-1	50	29" x 29" x 41½"	3/8"	7/8"	271

CRT Series

13 SEER
2 to 5 Ton



The Goodman® CRT Air Conditioner features an attractive louvered metal guard that protects the coil from damage and strengthens the unit. Designed for ground-level or rooftop mount, the raised base pan elevates the unit above the slab for excellent water drainage. The polyester powder-paint finish provides premium durability and improved UV protection.

- High-efficiency scroll compressor
- Copper tube/aluminum fin coil
- Totally enclosed and permanently lubricated 8-pole, 850-RPM PSC condenser motor
- R-22 refrigerant-charged for 15' of refrigerant lines
- Factory-installed liquid line filter drier
- Contactor with lug connections
- Ground lug connection
- Brass liquid and suction service valves with sweat connections
- Heavy-gauge, G-90 galvanized-steel cabinet with appliance-quality polyester powder-paint finish with 500-hour salt-spray approval
- Attractive Architectural Gray paint finish



Model	Nominal Cooling Capacity (BTUH)	Voltage-Phase	Maximum Overcurrent Device (amps)	Dimensions W x D x H	Service Valve		Shipping Weight (pounds)
					Liquid	Suction	
CRT24-1	22,400	208/230-1	20	29" x 29" x 26½"	3/8"	3/4"	173
CRT30-1	28,000	208/230-1	20	29" x 29" x 31½"	3/8"	3/4"	208
CRT36-1	36,000	208/230-1	30	29" x 29" x 31½"	3/8"	3/4"	209
CRT42-1	41,000	208/230-1	30	29" x 29" x 39"	3/8"	7/8"	258
CRT48-1	45,000	208/230-1	40	29" x 29" x 41½"	3/8"	7/8"	270
CRT60-1	53,000	208/230-1	50	29" x 29" x 41½"	3/8"	7/8"	271

CLJ Series

12 SEER
1½ to 5 Ton



The Goodman® CLJ Air Conditioner features an attractive louvered metal guard that protects the coil from damage and strengthens the unit. Designed for ground-level or rooftop mount, the raised base pan elevates the unit above the slab for excellent water drainage. A polyester powder-paint finish provides premium durability and improved UV protection.

- Energy-efficient compressor with internal pressure relief valve
- Copper tube/aluminum fin coil
- Totally enclosed, permanently lubricated condenser motor with a 3-bladed fan
- R-22 refrigerant-charged for 15' of refrigerant lines
- High-capacity, steel-cased liquid line filter drier
- Brass liquid and suction service valves mounted at a 45° angle with sweat connections and service ports
- Heavy-gauge G-90 galvanized-steel cabinet with appliance-quality polyester powder-paint finish with 500-hour salt-spray approval
- Attractive Architectural Gray paint finish

Model	Nominal Cooling Capacity (BTUH)	Voltage-Phase	Maximum Overcurrent Device (amps)	Dimensions W x D x H	Service Valve		Shipping Weight (pounds)
					Liquid	Suction	
CLJ18-1C	18,400	208/230-1	20	23" x 23" x 26½"	3/8"	3/4"	135
CLJ24-1C	23,400	208/230-1	20	23" x 23" x 31½"	3/8"	3/4"	160
CLJ30-1C	30,000	208/230-1	30	29" x 29" x 26½"	3/8"	3/4"	173
CLJ36-1C	36,000	208/230-1	30	29" x 29" x 29"	3/8"	3/4"	174
CLJ42-1C	41,000	208/230-1	40	29" x 29" x 31½"	3/8"	3/4"	175
CLJ48-1C	47,000	208/230-1	50	29" x 29" x 31½"	3/8"	7/8"	208
CLJ60-1C	56,000	208/230-1	50	29" x 29" x 41½"	3/8"	7/8"	270

CKL Series

10 SEER

1½ to 10 Ton/Single-Phase and 3-Phase Power



The Goodman® CKL Air Conditioner features an attractive louvered metal guard that protects the coil from damage and strengthens the unit. Designed for ground-level or rooftop mount, the raised base pan elevates the unit above the slab for excellent water drainage. A polyester powder-paint finish provides premium durability and improved UV protection.

- Energy-efficient compressor with internal pressure release valve
- Copper tube/aluminum fin coil
- Totally enclosed, permanently lubricated condenser motor with a 3-bladed fan
- 1½- to 5-ton models are charged with R-22 for 15' of refrigerant lines
- 7½- and 10-ton models are charged with 2 lbs. of R-22 refrigerant
- High-capacity, steel-cased liquid line filter drier
- Brass liquid and suction service valves mounted at a 45° angle with sweat connections and service ports
- 7½- and 10-ton models comply with ASHRAE Standard 90.1
- Heavy-gauge G-90 galvanized steel cabinet with appliance-quality polyester powder-paint finish with 500-hour salt-spray approval
- Attractive Architectural Gray paint finish

Model	Nominal Cooling Capacity (BTUH)	Voltage-Phase	Maximum Overcurrent Protection (amps)	Dimensions W x D x H	Service Valve		Shipping Weight (pounds)
					Liquid	Suction	
CKL18-1L	18,000	208/230-1	20	23" x 23" x 24"	3/8"	3/4"	125
CKL24-1L	24,000	208/230-1	20	23" x 23" x 24"	3/8"	3/4"	127
CKL30-1L	29,000	208/230-1	30	23" x 23" x 24"	3/8"	3/4"	130
CKL36-1L	35,000	208/230-1	40	23" x 23" x 29"	3/8"	3/4"	152
CKL42-1L	41,000	208/230-1	40	23" x 23" x 31½"	3/8"	7/8"	160
CKL49-1L	47,000	208/230-1	40	29" x 29" x 29"	3/8"	7/8"	176
CKL60-1L	57,000	208/230-1	50	29" x 29" x 31½"	3/8"	7/8"	208
CKL62-1L	62,000	208/230-1	60	29" x 29" x 39"	3/8"	7/8"	258
CKL36-3L	35,000	208/230-3	20	23" x 23" x 26½"	3/8"	3/4"	142
CKL49-3L	47,000	208/230-3	30	29" x 29" x 29"	3/8"	7/8"	176
CKL60-3L	57,000	208/230-3	30	29" x 29" x 31½"	3/8"	7/8"	208
CKL60-4L	57,000	460-3	15	29" x 29" x 31½"	3/8"	7/8"	208
CKL090-3L	88,000	208/230-3	60	35" x 35" x 41½"	3/8"	1⅝"	370
CKL120-3L	114,000	208/230-3	30	35" x 35" x 41½"	3/8"	1⅝"	420
CKL090-4L	88,000	460-3	60	35" x 35" x 41½"	3/8"	1⅝"	370
CKL120-4L	114,000	460-3	35	35" x 35" x 41½"	3/8"	1⅝"	420

TWC Series

10 SEER
1½ to 2½ Ton



The Goodman® TWC Through-the-Wall Air Conditioner features a powder-paint finish that provides premium durability. Designed for wall-mount operation, the unit can be serviced from inside the living space without removing the chassis from the wall.

- Energy-efficient compressor with internal pressure relief valve
- Copper tube/aluminum fin coil
- Totally enclosed, permanently lubricated condenser fan motor
- Quiet air discharge system for low operating sound
- R-22 refrigerant-charged for 15' of refrigerant lines
- Factory-installed liquid line filter drier
- Brass suction and liquid shut-off valves
- Heavy-gauge G-90 galvanized steel cabinet with appliance-quality polyester powder-paint finish with 500-hour salt-spray approval
- Attractive Architectural Gray paint finish



Model	Nominal Cooling Capacity (BTUH)	Voltage-Phase	Maximum Overcurrent Device (amps)	Dimensions W x D x H	Service Valve		Shipping Weight (pounds)
					Liquid	Suction	
TWC18-1B	18,000	208/230-1	20	24" x 18¾" x 32"	3/8"	3/4"	185
TWC24-1B	24,000	208/230-1	20	24" x 18¾" x 32"	3/8"	3/4"	185
TWCR30-1B	27,400	208/230-1	30	24" x 18¾" x 32"	3/8"	3/4"	190

CPLT Series

13 SEER
2 to 5 Ton



The Goodman® CPLT Heat Pump features an attractive louvered metal guard protects the coil from damage and strengthens the unit. Designed for ground-level or rooftop mount, the base pan elevates the unit above the slab for excellent water drainage. A polyester powder-paint finish provides premium durability and improved UV protection.

- High-efficiency scroll compressor with internal pressure relief valve
- Quiet condenser fan system includes an 8-pole, 840 RPM motor, 4-bladed fan and wire discharge grille
- High-quality sound blanket diminishes compressor operating sound
- R-22 refrigerant-charged for 15' of refrigerant lines
- High-capacity, steel-cased bi-flow heat pump filter drier
- Suction line accumulator
- Check flowrate expansion device for heat pump applications
- Discharge line muffler
- Loss-of-charge protection provided by a low-pressure switch
- Reliable, time-initiated, temperature-terminated defrost control
- Brass liquid and suction line service valves mounted at a 45° angle with sweat connections and service ports
- Heavy-gauge G-90 galvanized-steel cabinet with appliance-quality polyester powder-paint finish with 500-hour salt-spray approval
- Attractive Architectural Gray paint finish

Heat Pump Accessories

- All Fuel Kit (AFE18-60A)
- Outdoor Thermostat Kit (OT18-60A)
- Emergency Heat Relay Kit (EH18-60)



Model	Nominal Cooling Capacity (BTUH)	Nominal Heating Capacity (BTUH - 47 °F)	Voltage-Phase	Maximum Overcurrent Device (amps)	Dimensions W x D x H	Service Valve		Shipping Weight (pounds)
						Liquid	Suction	
CPLT24-1B	22,800	23,000	208/230-1	20	29" x 29" x 31½"	3/8"	3/4"	137
CPLT30-1B	30,000	31,000	208/230-1	30	29" x 29" x 26½"	3/8"	3/4"	142
CPLT36-1B	35,000	36,000	208/230-1	30	29" x 29" x 29"	3/8"	7/8"	152
CPLT42-1B	40,000	40,000	208/230-1	40	29" x 29" x 31½"	3/8"	7/8"	162
CPLT48-1B	46,500	46,000	208/230-1	40	35½" x 35½" x 31½"	3/8"	7/8"	249
CPLT60-1B	55,000	55,000	208/230-1	50	35½" x 35½" x 35½"	3/8"	7/8"	337

CPRT Series

13 SEER
2 to 5 Ton



The Goodman® CPRT Heat Pump features an attractive louvered metal guard protects the coil from damage and strengthens the unit. Designed for ground-level or rooftop mount, the base pan elevates the unit above the slab for excellent water drainage. A polyester powder-paint finish provides premium durability and improved UV protection.

- High-efficiency scroll compressor
- Condenser fan system includes an 8-pole, 850-RPM motor, 4-bladed fan and wire discharge grille
- R-22 refrigerant-charged for 15' of refrigerant lines
- High-capacity, steel-cased bi-flow heat pump filter drier
- Suction line accumulator
- Check flowrate expansion device for heat pump applications
- Discharge line muffler
- Loss-of-charge protection provided by a low-pressure switch
- Reliable, time-initiated, temperature-terminated defrost control
- Brass liquid and suction line service valves mounted at a 45° angle with sweat connections and service ports
- Contactor with lug connection
- Ground lug connection
- Heavy-gauge G-90 galvanized-steel cabinet with appliance-quality polyester powder-paint finish with 500-hour salt-spray approval
- Attractive Architectural Gray paint finish

Heat Pump Accessories

- All Fuel Kit (AFE18-60A)
- Outdoor Thermostat Kit (OT18-60A)
- Emergency Heat Relay Kit (EH18-60)



Model	Nominal Cooling Capacity (BTUH)	Nominal Heating Capacity (BTUH - 47 °F)	Voltage-Phase	Maximum Overcurrent Device (amps)	Dimensions W x D x H	Service Valve		Shipping Weight (pounds)
						Liquid	Suction	
CPRT24-1	22,800	23,000	208/230-1	20	29" x 29" x 31½"	3/8"	3/4"	137
CPRT30-1	30,000	31,000	208/230-1	30	29" x 29" x 26½"	3/8"	3/4"	142
CPRT36-1	35,000	36,000	208/230-1	30	29" x 29" x 29"	3/8"	7/8"	152
CPRT42-1	40,000	40,000	208/230-1	40	29" x 29" x 31½"	3/8"	7/8"	162
CPRT48-1	46,500	46,000	208/230-1	40	35½" x 35½" x 31½"	3/8"	7/8"	249
CPRT60-1	55,000	55,000	208/230-1	50	35½" x 35½" x 36½"	3/8"	7/8"	337

CPLJ Series

12 SEER
1½ to 5 Ton



The Goodman® CPLJ Heat Pump features an attractive louvered metal guard protects the coil from damage and strengthens the unit. Designed for ground-level or rooftop mount, the base pan elevates the unit above the slab for excellent water drainage. A polyester powder-paint finish provides premium durability and improved UV protection.

- Energy-efficient compressor with internal pressure relief valve
- High-efficiency copper tube/aluminum fin coil
- R-22 refrigerant-charged for 15' of refrigerant lines
- High-capacity, steel-cased bi-flow heat pump filter drier
- Suction line accumulator
- Check flowrate expansion device for heat pump applications
- Discharge line muffler
- Loss-of-charge protection provided by a low-pressure switch
- Reliable, time-initiated, temperature-terminated defrost control
- Brass liquid and suction line service valves mounted at a 45° angle with sweat connections and service ports
- Heavy-gauge G-90 galvanized-steel cabinet with appliance-quality polyester powder-paint finish with 500-hour salt-spray approval
- Attractive Architectural Gray paint finish

Heat Pump Accessories

- All Fuel Kit (AFE18-60A)
- Outdoor Thermostat Kit (OT18-60A)
- Emergency Heat Relay Kit (EH18-60)

Model	Nominal Cooling Capacity (BTUH)	Nominal Heating Capacity (BTUH - 47 °F)	Voltage-Phase	Maximum Overcurrent Device (amps)	Dimensions W x D x H	Service Valve		Shipping Weight (pounds)
						Liquid	Suction	
CPLJ18-1B	18,000	18,000	208/230-1	20	23" x 23" x 34"	3/8"	3/4"	127
CPLJ24-1B	23,000	23,000	208/230-1	20	29" x 29" x 26½"	3/8"	3/4"	137
CPLJ30-1B	30,000	30,000	208/230-1	30	29" x 29" x 26½"	3/8"	3/4"	142
CPLJ36-1B	35,000	35,000	208/230-1	30	29" x 29" x 31½"	3/8"	3/4"	152
CPLJ42-1B	41,000	40,000	208/230-1	40	29" x 29" x 39"	3/8"	7/8"	162
CPLJ48-1B	46,000	46,000	208/230-1	40	29" x 29" x 41½"	3/8"	7/8"	178
CPLJ60-1B	56,000	56,000	208/230-1	50	29" x 29" x 41½"	3/8"	7/8"	182

CPLE Series

10 SEER

1½ to 10 Ton/Single-Phase and 3-Phase Power



The Goodman® CPLE Heat Pump features an attractive louvered metal guard protects the coil from damage and strengthens the unit. Designed for ground-level or rooftop mount, the base pan elevates the unit above the slab for excellent water drainage. A polyester powder-paint finish provides premium durability and improved UV protection.

- Energy-efficient compressor with internal pressure relief valve
- Copper tube/aluminum fin coil
- 1½- to 5-ton models are charged with R-22 for 15' of refrigerant lines
- 7½- and 10-ton models are charged with 2 lbs. of R-22 refrigerant
- High-capacity, steel-cased bi-flow heat pump filter drier
- Suction line accumulator
- Check flowrate expansion device for heat pump applications
- Discharge line muffler
- Loss-of-charge protection provided by a low-pressure switch
- Reliable, time-initiated, temperature-terminated defrost control
- Brass liquid and suction line service valves mounted at a 45° angle with sweat connections and service ports
- 7½- and 10-ton models comply with ASHRAE Standard 90.1
- Heavy-gauge G-90 galvanized-steel cabinet with appliance-quality polyester powder-paint finish with 500-hour salt-spray approval
- Attractive Architectural Gray paint finish

Heat Pump Accessories

- All Fuel Kit (AFE18-60A)
- Outdoor Thermostat Kit (OT18-60A)
- Emergency Heat Relay Kit (EH18-60)

Model	Nominal Cooling Capacity (BTUH)	Nominal Heating Capacity (BTUH - 47 °F)	Voltage-Phase	Maximum Overcurrent Device (amps)	Dimensions W x D x H	Service Valve		Shipping Weight (pounds)
						Liquid	Suction	
CPLE18-1C	17,400	18,000	208/230-1	20	23" x 23" x 24"	3/8"	3/4"	127
CPLE24-1C	22,800	22,800	208/230-1	30	23" x 23" x 31½"	3/8"	3/4"	137
CPLE30-1C	28,000	29,000	208/230-1	30	23" x 23" x 31½"	3/8"	3/4"	142
CPLE36-1C	35,000	33,200	208/230-1	30	29" x 29" x 26½"	3/8"	3/4"	152
CPLE42-1C	41,000	41,500	208/230-1	40	29" x 29" x 31½"	3/8"	7/8"	162
CPLE48-1C	45,000	45,000	208/230-1	40	29" x 29" x 34"	3/8"	7/8"	178
CPLE60-1C	55,000	55,000	208/230-1	50	29" x 29" x 34"	3/8"	7/8"	210
CPLE48-3C	45,000	45,000	208/230-3	30	29" x 29" x 34"	3/8"	7/8"	178
CPLE60-3C	55,000	55,000	208/230-3	30	29" x 29" x 34"	3/8"	7/8"	210
CPLE090-3C	87,000	84,000	208/230-3	60	35" x 35" x 41½"	5/8"	1½"	390
CPLE120-3C	109,000	109,000	208/230-3	60	35" x 35" x 41½"	5/8"	1½"	440
CPLE090-4C	87,000	84,000	460-3	30	35" x 35" x 41½"	5/8"	1½"	390
CPLE120-4C	109,000	109,000	460-3	35	35" x 35" x 41½"	5/8"	1½"	440

GMV9/GCV9 Two-Stage, Variable-Speed Series

93% AFUE

69,000 – 115,000 BTUH



The Goodman® GMV9/GCV9 Two-Stage, Variable-Speed Gas Furnace features a patented aluminized-steel tubular heat exchanger and energy-efficient Hot Surface Ignition system. These furnaces are run-tested for heating or combination heating/cooling applications. With a corrosion-resistant, painted steel cabinet, these units can be installed in a variety of locations.



- Corrosion-resistant, aluminized-steel tubular heat exchanger and stainless-steel recuperative coil for maximum efficiency
- Designed for multi-position installation—GMV9: upflow, horizontal right or left; GCV9: downflow, horizontal right or left
- Energy-saving, reliable Hot Surface Ignition system, featuring a Norton® Mini-Igniter with patented adaptive learning algorithm to maximize igniter life
- Auto-Comfort mode helps to efficiently create and maintain a comfortable climate by intuitively adjusting to the room's environment
- Aluminized-steel inshot burners
- 2-stage gas valve and super-efficient, quiet variable-speed blower motor
- Quiet, 2-speed, induced-draft blower assembly
- Integrated furnace control with diagnostics
- Low-voltage terminal blocks
- Multiple flame roll-out switches, blower door safety switch, outlet air-limit switch and pressure switch for proof of combustion air
- 40VA transformer for heating and air conditioning control service
- Top venting is standard; alternate flue/vent located on the right side (GMV9)
- All models comply with California NOx Standards
- Suitable for direct vent (2-pipe) or non-direct vent (1-pipe) applications
- Foil-face insulation lines the heat exchanger compartment
- Coil and furnace fit flush for easy installation
- Convenient left or right connection for gas and electric service
- Bottom or side air inlet (GMV9)
- Removable, solid bottom (GMV9)
- Heavy-gauge, reinforced, fully insulated steel cabinet with durable, baked-enamel, Architectural Gray paint finish



Model	High Fire		Low Fire		Available Cooling	Dimensions W x D x H	Shipping Weight (pounds)
	Rated Heating Input	Rated Heating Output	Rated Heating Input	Rated Heating Output			
GMV90704CXA	69,000	64,200	48,000	44,600	1.5 - 4.0	21" x 28" x 40"	135
GMV90905DXA	92,000	84,000	64,000	59,500	2.0 - 5.0	24½" x 28" x 40"	172
GMV91155DXA	115,000	106,500	80,000	74,400	2.0 - 5.0	24½" x 28" x 40"	175
GCV90704CXA	69,000	64,200	48,000	45,000	1.5 - 4.0	21" x 28" x 40"	135
GCV90905DXA	92,000	84,000	64,000	60,100	2.0 - 5.0	24½" x 28" x 40"	172

GMS9/GCS9 Single-Stage, Multi-Speed Series

93% AFUE

46,000 – 115,000 BTUH



The Goodman® GMS9/GCS9 Single-Stage, Multi-Speed Gas Furnaces feature a patented aluminized-steel tubular heat exchanger and energy-efficient Hot Surface Ignition system. These furnaces are run-tested for heating or combination heating/cooling applications. With a corrosion-resistant, painted steel cabinet, these units can be installed in a variety of locations.

- Corrosion-resistant, aluminized-steel tubular heat exchanger and stainless-steel recuperative coil for maximum efficiency
- Designed for multi-position installation—GMS9: upflow, horizontal right or left; GCS9: downflow, horizontal right or left
- Energy-saving, reliable Hot Surface Ignition system, featuring a Norton® Mini-Igniter with patented adaptive learning algorithm to maximize igniter life
- Aluminized-steel inshot burners
- Energy-saving PSC, multi-speed, direct-drive blower motor
- Quiet, corrosion-resistant, induced-draft blower assembly
- Integrated furnace control with diagnostics
- Low-voltage terminal blocks
- Multiple flame roll-out switches, blower door safety switch, outlet air-limit switch and pressure switch for proof of combustion air
- 40VA transformer for heating and air conditioning control service
- Combination redundant gas valve and regulator
- Top venting is standard; alternate flue/vent located on right side (GMS9)
- All models comply with California NO_x Standards
- Suitable for direct vent (2-pipe) or non-direct vent (1-pipe) applications
- Foil-face insulation lines the heat exchanger compartment
- Coil and furnace fit flush for easy installation
- Convenient left or right connection for gas and electric service
- Bottom or side air inlet (GMS9)
- Removable, solid bottom (GMS9)
- Heavy-gauge, reinforced, fully insulated steel cabinet with durable, baked-enamel, Architectural Gray paint finish



Model	Rated Heating Input (BTUH)	Rated Heating Output (BTUH)	Available Cooling @ 0.5" ESP (tons)	Dimensions W x D x H	Shipping Weight (pounds)
GMS90453BXA	46,000	42,800	3.0	17½" x 28" x 40"	132
GMS90703BXA	69,000	64,400	3.0	17½" x 28" x 40"	135
GMS90904CXA	92,000	86,000	4.0	21" x 28" x 40"	158
GMS91155DXA	115,000	106,500	5.0	24½" x 28" x 40"	175
GCS90453BXA	46,000	42,800	3.0	17½" x 28" x 40"	132
GCS90703BXA	69,000	64,400	3.0	17½" x 28" x 40"	135
GCS90904CXA	92,000	86,000	4.0	21" x 28" x 40"	156
GCS91155DXA	115,000	106,500	5.0	24½" x 28" x 40"	175

GMV8 Two-Stage, Variable-Speed Series

80% AFUE

70,000 – 115,000 BTUH



The Goodman® GMV8 Two-Stage, Variable-Speed Gas Furnace features a patented aluminized-steel tubular heat exchanger and energy-efficient Hot Surface Ignition system. This furnace is run-tested for heating or combination heating/cooling applications. With a heavy-gauge, reinforced, wrap-around insulated steel cabinet and durable baked enamel finish, these units can be installed in a variety of locations.

- Corrosion-resistant, aluminized-steel tubular heat exchanger
- Designed for multi-position installation—upflow, horizontal right or left
- Energy-saving, reliable Hot Surface Ignition system, featuring a Norton® Mini-Igniter with patented adaptive learning algorithm to maximize igniter life
- Auto-Comfort mode helps to efficiently create and maintain a comfortable climate by intuitively adjusting to the room’s environment
- Aluminized-steel inshot burners
- 2-stage gas valve and super-efficient, quiet variable-speed blower motor
- Quiet, 2-speed, induced-draft blower assembly
- Integrated furnace control with diagnostics
- Low-voltage terminal blocks
- Multiple flame roll-out switches, blower door safety switch, outlet air-limit switch and pressure switch for proof of combustion air
- 40VA transformer for heating and air conditioning control service
- A rotating combustion air blower that provides the option of venting the furnace through the top, right-hand side or left-hand side
- All models comply with California NOx Standards
- Foil-face insulation lines the heat exchanger compartment
- Coil and furnace fit flush for easy installation
- Convenient left or right connection for gas and electric service
- Bottom or side air inlet
- Removable, solid bottom
- Heavy-gauge, reinforced, fully insulated steel cabinet with durable, baked-enamel, Architectural Gray paint finish

Model	High Fire		Low Fire		Available Cooling	Dimensions W x D x H	Shipping Weight (pounds)
	Rated Heating Input	Rated Heating Output	Rated Heating Input	Rated Heating Output			
GMV80703BXA	70,000	57,400	52,500	42,000	1.5 - 3.0	17½" x 28" x 39"	152
GMV80905CXA	90,000	73,600	67,500	54,000	2.0 - 5.0	21" x 28" x 39"	178
GMV81155CXA	115,000	92,000	86,000	69,000	2.0 - 5.0	21" x 28" x 39"	194

GMS8 Single-Stage, Multi-Speed Series

80% AFUE

45,000 – 140,000 BTUH



The Goodman® GMS8 Single-Stage, Multi-Speed Gas Furnaces feature a patented aluminized steel tubular heat exchanger and energy-efficient Hot Surface Ignition system. These furnaces are run-tested for heating or combination heating/cooling applications. With a heavy-gauge, reinforced, wrap-around insulated steel cabinet and durable baked enamel finish, these units can be installed in a variety of locations.

- Corrosion-resistant, aluminized-steel tubular heat exchanger
- Designed for upflow, horizontal right or left installation
- Energy-saving, reliable Hot Surface Ignition system, featuring a Norton® Mini-Igniter with patented adaptive learning algorithm to maximize igniter life
- Aluminized-steel inshot burners
- Energy-saving PSC, multi-speed, direct-drive blower motor
- Quiet, corrosion-resistant, induced-draft blower assembly
- Integrated furnace control with diagnostics
- Low-voltage terminal blocks
- Multiple flame roll-out switches, blower door safety switch, outlet air-limit switch and pressure switch for proof of combustion air
- 40VA transformer for heating and air conditioning control service
- Combination redundant gas valve and regulator
- A rotating combustion air blower that provides the option of venting the furnace through the top, right-hand side or left-hand side
- Specific models comply with California NOx Standards
- Foil-face insulation lines the heat exchanger compartment
- Coil and furnace fit flush for easy installation
- Convenient left or right connection for gas and electric service
- Bottom or side air inlet
- Removable, solid bottom
- Heavy-gauge, reinforced, fully insulated steel cabinet with durable, baked-enamel, Architectural Gray paint finish

Model	Rated Heating Input (BTUH)	Rated Heating Output (BTUH)	Available Cooling @ 0.5" ESP (tons)	Dimensions W x D x H	Shipping Weight (pounds)
GMS80453ANA*	45,000	36,000	3.0	14" x 28" x 39"	120
GMS80703ANA*	70,000	56,000	3.0	14" x 28" x 39"	130
GMS80704BNA*	70,000	56,000	4.0	17½" x 28" x 39"	143
GMS80903BNA	90,000	72,000	3.0	17½" x 28" x 39"	153
GMS80904BNA*	90,000	72,000	4.0	17½" x 28" x 39"	153
GMS80905CNA*	90,000	72,000	5.0	21" x 28" x 39"	163
GMS81155CNA*	115,000	92,000	5.0	21" x 28" x 39"	163
GMS81405DNA*	140,000	112,000	5.0	24½" x 28" x 39"	183

* Denotes low NOx model available.

GDS8 Single-Stage, Multi-Speed Series

80% AFUE

45,000 – 140,000 BTUH



The Goodman® GDS8 Single-Stage, Multi-Speed Gas Furnaces feature a patented aluminized steel tubular heat exchanger and energy-efficient Hot Surface Ignition system. These furnaces are run-tested for heating or combination heating/cooling applications. With a heavy-gauge, reinforced, wrap-around insulated steel cabinet and durable baked enamel finish, these units can be installed in a variety of locations.

- Corrosion-resistant, aluminized-steel tubular heat exchanger
- Designed for dedicated downflow installation
- Energy-saving, reliable Hot Surface Ignition system, featuring a Norton® Mini-Igniter with patented adaptive learning algorithm to maximize igniter life
- Aluminized-steel inshot burners
- Energy-saving PSC, multi-speed, direct-drive blower motor
- Quiet, corrosion-resistant, induced-draft blower assembly
- Integrated furnace control with diagnostics
- Low-voltage terminal blocks
- Multiple flame roll-out switches, blower door safety switch, outlet air-limit switch and pressure switch for proof of combustion air
- 40VA transformer for heating and air conditioning control service
- Combination redundant gas valve and regulator
- Foil-face insulation lines the heat exchanger compartment
- Coil and furnace fit flush for easy installation
- Convenient left or right connection for gas and electric service
- Heavy-gauge, reinforced, fully insulated steel cabinet with durable, baked-enamel, Architectural Gray paint finish

Model	Rated Heating Input (BTUH)	Rated Heating Output (BTUH)	Available Cooling @ 0.5" ESP (tons)	Dimensions W x D x H	Shipping Weight (pounds)
GDS80453ANA	45,000	36,000	3.0	14" x 28" x 39"	120
GDS80703ANA	70,000	56,000	3.0	14" x 28" x 39"	130
GDS80904BNA	90,000	72,000	4.0	17½" x 28" x 39"	153
GDS81155CNA	115,000	92,000	5.0	21" x 28" x 39"	175

GHS8 Single-Stage, Multi-Speed, High Airflow Series

80% AFUE

45,000 – 90,000 BTUH



The Goodman® GHS8 Single-Stage, Multi-Speed, High Airflow Gas Furnaces feature our patented aluminized-steel tubular heat exchanger and high-efficiency Hot Surface Ignition system. This furnace is completely assembled at our factory and run-tested for heating or combination heating/cooling applications. With a heavy-gauge, reinforced, wrap-around insulated steel cabinet and durable baked enamel finish, these units can be installed in a variety of locations.

- Corrosion-resistant, aluminized-steel tubular heat exchanger
- Designed for high air flow, upflow, horizontal right or left installation
- Energy-saving, reliable Hot Surface Ignition system, featuring a Norton® Mini-Igniter with patented adaptive learning algorithm to maximize igniter life
- Aluminized-steel inshot burners
- Energy-saving PSC, multi-speed, direct-drive blower motor
- Quiet, corrosion-resistant, induced-draft blower assembly
- Integrated furnace control with diagnostics
- Low-voltage terminal blocks
- Multiple flame roll-out switches, blower door safety switch, outlet air-limit switch and pressure switch for proof of combustion air
- 40VA transformer for heating and air conditioning control service
- Combination redundant gas valve and regulator
- A rotating combustion air blower that provides the option of venting the furnace through the top, right-hand side or left-hand side
- Foil-face insulation lines the heat exchanger compartment
- Coil and furnace fit flush for easy installation
- Convenient left or right connection for gas and electric service
- Bottom or side air inlet
- Removable, solid bottom
- Heavy-gauge, reinforced, fully insulated steel cabinet with durable, baked-enamel, Architectural Gray paint finish



Model	Rated Heating Input (BTUH)	Rated Heating Output (BTUH)	Available Cooling @ 0.5" ESP (tons)	Dimensions W x D x H	Shipping Weight (pounds)
GHS80453ANA	45,000	36,000	3.0	14" x 28" x 39"	120
GHS80704BNA	70,000	56,000	4.0	17½" x 28" x 39"	130
GHS80905CNA	90,000	72,000	5.0	21" x 28" x 39"	153

PCKJ Series

12 SEER
2 to 5 Ton



The Goodman® PCKJ Packaged Air Conditioner features cooling capacities of 23,800 to 56,000 BTUH. This unit allows for ground-level or rooftop applications and is approved for manufactured or modular homes. The base pan elevates the unit above the slab. The PCKJ's exterior has a powder-paint finish.



- High-efficiency compressor with internal relief valve
- High-static, multi-speed evaporator blower motor
- Quiet top condenser discharge
- Copper tube/aluminum fin coil
- Totally enclosed, permanently lubricated condenser fan motor
- Fully charged R-22 system
- Liquid line filter drier
- Fully insulated air handling compartment has convenient access panels
- 5 kW to 20 kW electric heat is available as a field-installed accessory
- Heavy-gauge G-90 galvanized-steel cabinet with attractive Architectural Gray powder-paint finish



Model	Nominal Cooling Capacity (BTUH)	Electric Heat Capacity (kW)	Nominal Cooling CFM @ 0.5" ESP High/Low	Voltage-Phase	Maximum Overcurrent Protection (amps)	Dimensions W x D x H	Shipping Weight (pounds)
PCKJ024-1F	23,800	5, 8, 10	1,070/975	208/230-1	20	56 ³ / ₈ " x 24 ¹ / ₂ " x 27 ¹ / ₈ "	275
PCKJ030-1F	29,000	5, 8, 10, 15	1,325/1,165	208/230-1	30	56 ³ / ₈ " x 24 ¹ / ₂ " x 27 ¹ / ₈ "	280
PCKJ036-1F	36,000	5, 8, 10, 15, 20	1,520/1,225	208/230-1	30	63 ¹ / ₈ " x 32 ¹ / ₈ " x 29 ⁵ / ₈ "	350
PCKJ042-1F	40,200	5, 8, 10, 15, 20	1,520/1,225	208/230-1	40	63 ¹ / ₈ " x 32 ¹ / ₈ " x 29 ⁵ / ₈ "	355
PCKJ048-1F	46,000	5, 8, 10, 15, 20	1,695/1,490	208/230-1	40	63 ¹ / ₈ " x 32 ¹ / ₈ " x 34 ⁵ / ₈ "	370
PCKJ060-1F	56,000	5, 8, 10, 15, 20	2,220/1,970	208/230-1	60	63 ¹ / ₈ " x 32 ¹ / ₈ " x 34 ⁵ / ₈ "	375

PCK Series

10 SEER 2 to 5 Ton/Single-Phase and 3-Phase Power



The Goodman® PCK Packaged Air Conditioner features cooling capacities of 23,200 to 58,000 BTUH. This unit allows for ground-level or rooftop applications and is approved for manufactured or modular homes. The base pan elevates the unit above the slab. The PCK's exterior has a powder-paint finish.



- Energy-efficient compressor with internal relief valve
- High-static, multi-speed evaporator blower motor
- Quiet top condenser discharge
- Copper tube/aluminum fin coil
- Totally enclosed, permanently lubricated condenser fan motor
- Fully charged R-22 system
- Liquid line filter drier
- Fully insulated air handling compartment has convenient access panels
- 5 kW to 20 kW electric heat is available as a field-installed accessory
- Heavy-gauge G-90 galvanized-steel cabinet with attractive Architectural Gray powder-paint finish

Model	Nominal Cooling Capacity (BTUH)	Electric Heat Capacity (kW)	Nominal Cooling CFM @ 0.5" ESP High/Low	Voltage-Phase	Maximum Overcurrent Protection (amps)	Dimensions W x D x H	Shipping Weight (pounds)
PCK024-1F	23,200	5, 8, 10	1,070/975	208/230-1	30	56 ³ / ₈ " x 24 ¹ / ₂ " x 27 ¹ / ₈ "	240
PCK030-1F	28,000	5, 8, 10	1,325/1,165	208/230-1	30	56 ³ / ₈ " x 24 ¹ / ₂ " x 27 ¹ / ₈ "	260
PCK036-1F	36,000	5, 8, 10, 15	1,325/1,165	208/230-1	40	56 ³ / ₈ " x 24 ¹ / ₂ " x 27 ¹ / ₈ "	280
PCK042-1F	42,000	5, 8, 10, 15, 20	1,520/1,770	208/230-1	40	63 ¹ / ₈ " x 32 ¹ / ₈ " x 29 ⁵ / ₈ "	350
PCK048-1F	47,000	5, 8, 10, 15, 20	1,795/1,580	208/230-1	50	63 ¹ / ₈ " x 32 ¹ / ₈ " x 29 ⁵ / ₈ "	365
PCK060-1F	58,000	5, 8, 10, 15, 20	2,220/1,970	208/230-1	60	63 ¹ / ₈ " x 32 ¹ / ₈ " x 34 ⁵ / ₈ "	375
PCK036-3F	36,000	5, 8, 10, 15, 20	1,325/1,165	208/230-3	20	56 ³ / ₈ " x 24 ¹ / ₂ " x 27 ¹ / ₈ "	280
PCK048-3F	47,000	5, 8, 10, 15, 20	1,795/1,580	208/230-3	30	63 ¹ / ₈ " x 32 ¹ / ₈ " x 29 ⁵ / ₈ "	365
PCK060-3F	58,000	5, 8, 10, 15, 20	2,220/1,970	208/230-3	40	63 ¹ / ₈ " x 32 ¹ / ₈ " x 34 ⁵ / ₈ "	375
PCK060-4F	58,000	5, 8, 10, 15, 20	2,220/1,970	460-3	20	63 ¹ / ₈ " x 32 ¹ / ₈ " x 34 ⁵ / ₈ "	375

PCC Commercial Series

7½ and 10 Ton



The Goodman® PCC Commercial Packaged Air Conditioner features cooling capacities of 86,000 to 116,000 BTUH. This unit allows for over/under or downflow applications. Its control box and compressors are easily accessible from side access panels. The PCC Commercial's exterior has a powder-paint finish.

- Dual high-efficiency scroll compressors with internal motor protection (2-stage cooling)
- Two independent condenser coils for 2-stage operation
- Compressor grommets for vibration isolation
- Centrifugal fan for quiet and efficient operation
- Time delay for compressors sequence
- Copper tube/aluminum fin coil
- Totally enclosed, permanently lubricated outdoor fan motors
- Fully charged R-22 systems
- Factory wiring conveniently arranged to install accessories
- Base rails with fork slots for convenient handling and added rigidity
- High- and low-pressure controls on all systems
- Mild ambient switch
- Vertical discharge with removable grilles provides easy access to fans and motors
- Expansion valve evaporator coil
- Galvanized-steel, powder-coated drain pan with ¾" NPT condensate connection
- Belt-driven, variable-pitch sheave permits multi-speed adjustment
- Field-installed electric heat kits with rust-resistant nickel chromium heating elements
- 20 kW to 40 kW electric heat is available as a field-installed accessory
- Heavy-gauge, zinc-coated steel cabinet with attractive Architectural Gray powder-paint finish
- Built-in filter rack holds 2" filters (filters included)

Model	Nominal Cooling Capacity (BTUH)	Electric Heat Capacity (kW)	Nominal Cooling CFM	Voltage-Phase	Maximum Overcurrent Protection (amps)	Dimensions W x D x H	Shipping Weight (pounds)
PCC090-3A	86,000	20, 30, 40	3,000	208/230-3	60	74½" x 74½" x 36"	1,000
PCC120-3A	116,000	20, 30, 40	3,800	208/230-3	70	74½" x 74½" x 52"	1,290
PCC090-4A	86,000	20, 30, 40	3,000	460-3	30	74½" x 74½" x 36"	1,000
PCC120-4A	116,000	20, 30, 40	3,800	460-3	35	74½" x 74½" x 52"	1,290

PHKJ Series

12 SEER
2 to 5 Ton



The Goodman® PHKJ Packaged Heat Pump features cooling capacities of 23,000 to 52,600 BTUH and heating capacities from 22,000 to 54,000 BTUH. This unit allows for ground-level or rooftop applications and is approved for manufactured or modular homes. The base pan elevates the unit above the slab. The PHKJ's exterior has a powder-paint finish.

- High-efficiency compressor with internal relief valve
- High-static, multi-speed evaporator blower motor
- Quiet top condenser discharge
- Copper tube/aluminum fin coil
- Totally enclosed, permanently lubricated condenser fan motor
- Fully charged R-22 system
- Bi-flow liquid line filter drier
- Suction line accumulator
- Check flowrater expansion device
- Crankcase heater
- Fully insulated air handling compartment has convenient access panels
- 5 kW to 20 kW electric heat is available as a field-installed accessory
- Heavy-gauge G-90 galvanized-steel cabinet with attractive Architectural Gray powder-paint finish



Model	Nominal Cooling Capacity (BTUH)	Nominal Heating Capacity (BTUH - 47 °F)	Electric Heat Capacity (kW)	Nominal Cooling CFM @ 0.5" ESP High/Low	Voltage-Phase	Maximum Overcurrent Protection (amps)	Dimensions W x D x H	Shipping Weight (pounds)
PHKJ024-1F	23,000	22,000	5, 8, 10	1,070/975	208/230-1	20	63 ¹ / ₈ " x 32 ¹ / ₈ " x 29 ⁵ / ₈ "	275
PHKJ030-1F	29,000	27,000	5, 8, 10, 15	1,325/1,165	208/230-1	30	63 ¹ / ₈ " x 32 ¹ / ₈ " x 29 ⁵ / ₈ "	280
PHKJ036-1F	36,000	33,000	5, 8, 10, 15, 20	1,520/1,225	208/230-1	30	63 ¹ / ₈ " x 32 ¹ / ₈ " x 34 ⁵ / ₈ "	350
PHKJ042-1F	40,000	36,200	5, 8, 10, 15, 20	1,520/1,225	208/230-1	40	63 ¹ / ₈ " x 32 ¹ / ₈ " x 34 ⁵ / ₈ "	355
PHKJ048-1F	47,000	43,000	5, 8, 10, 15, 20	1,695/1,490	208/230-1	50	63 ¹ / ₈ " x 32 ¹ / ₈ " x 34 ⁵ / ₈ "	370
PHKJ060-1F*	52,600	54,000	5, 8, 10, 15, 20	2,220/1,970	208/230-1	60	63 ¹ / ₈ " x 32 ¹ / ₈ " x 34 ⁵ / ₈ "	375

* This unit is available in 11 SEER only

PHK Series

10 SEER 2 to 5 Ton/Single-Phase and 3-Phase Power



The Goodman® PHK Packaged Heat Pump features cooling capacities of 23,600 to 55,000 BTUH and heating capacities from 23,800 to 55,000 BTUH. This unit allows for a ground-level or rooftop applications and is approved for manufactured or modular homes. The base pan elevates the unit above the slab. The PHK's exterior has a powder-paint finish.



- Energy-efficient compressor with internal relief valve
- High-static, multi-speed evaporator blower motor
- Quiet top condenser discharge
- Copper tube/aluminum fin coil
- Totally enclosed, permanently lubricated condenser fan motor
- Fully charged R-22 system
- Bi-flow liquid line filter drier
- Suction line accumulator
- Check flowrater expansion device
- Crankcase heater
- Fully insulated air handling compartment has convenient access panels
- 5 kW to 20 kW electric heat is available as a field-installed accessory
- Heavy-gauge G-90 galvanized-steel cabinet with attractive Architectural Gray powder-paint finish

Model	Nominal Cooling Capacity (BTUH)	Nominal Heating Capacity (BTUH - 47 °F)	Electric Heat Capacity (kW)	Nominal Cooling CFM @ 0.5" ESP High/Low	Voltage-Phase	Maximum Overcurrent Protection (amps)	Dimensions W x D x H	Shipping Weight (pounds)
PHK024-1F	23,600	23,800	5, 8, 10	1,070/975	208/230-1	30	56 ³ / ₈ " x 24 ¹ / ₂ " x 27 ¹ / ₈ "	270
PHK030-1F	28,800	27,400	5, 8, 10, 15	1,325/1,165	208/230-1	30	56 ³ / ₈ " x 24 ¹ / ₂ " x 27 ¹ / ₈ "	275
PHK036-1F	35,000	33,400	5, 8, 10, 15, 20	1,520/1,225	208/230-1	40	63 ¹ / ₈ " x 32 ¹ / ₈ " x 29 ⁵ / ₈ "	365
PHK042-1F	40,500	34,000	5, 8, 10, 15, 20	1,520/1,225	208/230-1	40	63 ¹ / ₈ " x 32 ¹ / ₈ " x 34 ⁵ / ₈ "	380
PHK048-1F	47,000	44,400	5, 8, 10, 15, 20	1,695/1,490	208/230-1	50	63 ¹ / ₈ " x 32 ¹ / ₈ " x 34 ⁵ / ₈ "	410
PHK060-1F	55,000	55,000	5, 8, 10, 15, 20	2,220/1,970	208/230-1	60	63 ¹ / ₈ " x 32 ¹ / ₈ " x 34 ⁵ / ₈ "	415
PHK036-3F	35,000	33,400	5, 8, 10, 15, 20	1,520/1,225	208/230-3	20	63 ¹ / ₈ " x 32 ¹ / ₈ " x 29 ⁵ / ₈ "	365
PHK048-3F	47,000	44,400	5, 8, 10, 15, 20	1,695/1,490	208/230-3	30	63 ¹ / ₈ " x 32 ¹ / ₈ " x 34 ⁵ / ₈ "	410
PHK060-3F	55,000	55,000	5, 8, 10, 15, 20	2,220/1,970	208/230-3	40	63 ¹ / ₈ " x 32 ¹ / ₈ " x 34 ⁵ / ₈ "	415

GPG12 Series

12 SEER/80% AFUE
2 to 5 Ton



The Goodman® GPG12 Packaged Gas/Electric Unit features cooling capacities of 24,000 to 56,000 BTUH and heating input rates from 46,000 to 115,000 BTUH. This 12 SEER unit allows for ground-level or rooftop mount, horizontal or downflow applications and is approved for manufactured or modular homes. In addition to a fully insulated cabinet, the exterior is constructed of painted sheet metal that offers a high-quality, UV-resistant powder-paint finish.

- High-efficiency compressor
- Durable, corrosion-resistant aluminized-steel tubular heat exchanger
- Copper tube/aluminum fin coils
- Fully charged R-22 system
- Liquid line filter drier
- Redundant gas valve, natural gas and easy conversion to propane
- Power-assisted combustion
- Direct spark ignition system, which includes a microprocessor-based control for the entire ignition sequence, all blower operation and all safety circuits complete with self-diagnostics
- Bottom, 2" high base rails for easier handling
- All GPG12 models fit in a standard-size pick-up truck (47" wide)
- Horizontal or downflow application
- One roof curb fits all units
- Convenient access panels
- High-quality, UV-resistant, attractive, Architectural Gray powder-paint finish
- Fully insulated cabinet



Model	Nominal Cooling Capacity (BTUH)	Nominal Heating Capacity (BTUH)	Nominal Cooling CFM	Voltage-Phase	Maximum Overcurrent Protection Fuse/HACR Breaker (amps)	Dimensions W x D x H	Shipping Weight (pounds)
GPG12240451A	24,000	46,000	800	208-230/1	20	47" x 51" x 27"	393
GPG12240701A	24,000	69,000	800	208-230/1	20	47" x 51" x 27"	398
GPG12300701A	29,000	69,000	1,000	208-230/1	30	47" x 51" x 27"	404
GPG12360701A	35,800	69,000	1,250	208-230/1	30	47" x 51" x 32"	446
GPG12360901A	35,800	92,000	1,250	208-230/1	30	47" x 51" x 32"	451
GPG12420701A	40,600	69,000	1,400	208-230/1	40	47" x 51" x 32"	479
GPG12420901A	40,600	92,000	1,400	208-230/1	40	47" x 51" x 32"	484
GPG12480901A	47,000	92,000	1,525	208-230/1	40	47" x 51" x 40"	540
GPG12481151A	47,000	115,000	1,525	208-230/1	40	47" x 51" x 40"	547
GPG12600901A	55,000	92,000	1,900	208-230/1	50	47" x 51" x 40"	550
GPG12601151A	55,000	115,000	1,900	208-230/1	50	47" x 51" x 40"	557

GPG10 Series

10 SEER/80% AFUE 2 to 5 Ton/Single-Phase and 3-Phase Power



The Goodman® GPG10 Packaged Gas/Electric Unit features cooling capacities of 24,000 to 57,000 BTUH and heating input rates from 46,000 to 138,000 BTUH. This 10 SEER unit is available in single-phase and 3-phase models and allows for ground-level or rooftop mount, horizontal or downflow applications. The GPG10 is approved for manufactured or modular homes. In addition to a fully insulated cabinet, the exterior is constructed of painted sheet metal that offers a high-quality, UV-resistant powder-paint finish.

- Energy-efficient compressor
- Durable, corrosion-resistant aluminized-steel tubular heat exchanger
- Copper tube, aluminum fin coils
- Fully charged R-22 system
- Liquid line filter drier
- Redundant gas valve, natural gas and easy conversion to propane
- Power-assisted combustion
- Direct spark ignition system, which includes a microprocessor-based control for the entire ignition sequence, all blower operation and all safety circuits complete with self-diagnostics
- Bottom, 2" high base rails for easier handling
- All GPG10 models fit in a standard-size pick-up truck (47" wide)
- Horizontal or downflow application
- One roof curb fits all units
- Convenient access panels
- High-quality, UV-resistant, attractive, Architectural Gray powder-paint finish
- Fully insulated cabinet

Model	Nominal Cooling Capacity (BTUH)	Nominal Heating Capacity (BTUH)	Nominal Cooling CFM	Voltage-Phase	Maximum Overcurrent Protection Fuse/HACR Breaker (amps)	Dimensions W x D x H	Shipping Weight (pounds)
GPG10240451A	24,000	36,700	850	208-230/1	20	47" x 51" x 27"	386
GPG10240701A	24,000	55,000	850	208-230/1	20	47" x 51" x 27"	391
GPG10300701A	29,600	55,000	1,050	208-230/1	30	47" x 51" x 27"	397
GPG10360701A	35,200	55,000	1,250	208-230/1	30	47" x 51" x 32"	445
GPG10360901A	35,200	72,900	1,250	208-230/1	30	47" x 51" x 32"	450
GPG10420701A	40,000	55,000	1,425	208-230/1	40	47" x 51" x 32"	459
GPG10420901A	40,000	72,900	1,425	208-230/1	40	47" x 51" x 32"	464
GPG10480901A	47,000	72,900	1,525	208-230/1	50	47" x 51" x 40"	518
GPG10481151A	47,000	91,200	1,525	208-230/1	50	47" x 51" x 40"	525
GPG10600901A	56,000	72,900	1,950	208-230/1	60	47" x 51" x 40"	534
GPG10601401A	56,000	110,200	1,950	208-230/1	60	47" x 51" x 40"	548
GPG10360903A	35,200	72,900	1,250	208-230/3	20	47" x 51" x 40"	500
GPG10480903A	47,000	72,900	1,525	208-230/3	30	47" x 51" x 40"	518
GPG10600903A	56,000	72,900	1,950	208-230/3	40	47" x 51" x 40"	534
GPG10601403A	56,000	110,200	1,950	208-230/3	40	47" x 51" x 40"	548
GPG10601404A	56,000	110,200	1,950	460/3	20	47" x 51" x 40"	548

PGC Commercial Series

7½ and 10 Ton



The Goodman® PGC Commercial Packaged Gas/Electric Unit features cooling capacities of 86,000 to 116,000 BTUH and heating input rates from 133,000 to 153,000 BTUH. This unit allows for ground-level or rooftop-mount, over/under or downflow applications. Its control box and compressors are easily accessible from side access panels. The PGC Commercial's exterior has a powder-paint finish.

- Dual high-efficiency scroll compressors with internal motor protection (2-stage cooling)
- Heavy-gauge aluminized-steel, tubular heat exchanger cells
- Combination redundant gas valve and regulator
- Two independent condenser coils for 2-stage operation
- Power-assisted combustion
- Compressor grommets for vibration isolation
- Integrated DSI Ignition Control
- Centrifugal fan for quiet and efficient operation
- Time delay for compressors sequence
- Copper tube/aluminum fin coil
- Totally enclosed, permanently lubricated outdoor fan motors
- Fully charged R-22 systems
- Factory wiring conveniently arranged to install accessories
- Base rails with fork slots for convenient handling and added rigidity
- High- and low-pressure controls on all systems
- Mild ambient switch
- Vertical discharge with removable grilles provides easy access to fans and motors
- Expansion valve evaporator coil
- Galvanized-steel, powder-coated drain pan with ¾" NPT condensate connection
- Reliable 2-stage heating
- Belt-driven, variable-pitch sheave permits multi-speed adjustment
- Heavy-gauge, zinc-coated steel cabinet with attractive Architectural Gray powder-paint finish
- Built-in filter rack holds 2" disposable filters (filters included)

Model	Nominal Cooling Capacity (BTUH)	Nominal Heating Capacity (BTUH)	Nominal Cooling CFM	Voltage-Phase	Maximum Overcurrent Protection Fuse/HACR Breaker (amps)	Dimensions W x D x H	Shipping Weight (pounds)
PGC090195-3A	86,000	133,000	3,000	208/230-3	60	74½" x 74½" x 36"	1,100
PGC120225-3A	116,000	153,000	3,800	208/230-3	70	74½" x 74½" x 52"	1,400
PGC090195-4A	86,000	133,000	3,000	460-3	30	74½" x 74½" x 36"	1,100
PGC120225-4A	116,000	153,000	3,800	460-3	35	74½" x 74½" x 52"	1,400

AEPT Series

2 to 5 Ton



The Goodman® AEPT Multi-Position, Variable-Speed Electric Heat Air Handler features a factory-installed, internally mounted Thermal Expansion Valve (TXV). The AEPT's blower operation design includes a variable-speed DC motor, which helps eliminate the cold blast of air upon heating startup.

- Factory-installed, internally mounted TXV
- Variable-speed motor allows for a soft start and stop for quieter, more efficient operation
- Multi-position—upflow, downflow or horizontal installations
- Built-in coil has horizontal, vertical and downflow drain pans with secondary drain connections
- Built-in filter rack for 1" filter (filter not included)
- Power supply on top; low-voltage entry on top or side
- 5 kW to 21 kW electric heat is available as a field-installed accessory
- Factory-sealed to achieve 2% or less leakage rate at 1.0" water gauge external duct static pressure
- Provides constant CFM over a wide range of static pressure conditions independent of duct system; provides low CFM for efficient fan-only operation
- Up to 14 field-selectable airflow settings can be adjusted to optimize the system CFM for each individual mode of operation
- Improved humidity control and comfort
- Low-voltage cabinet connections; control circuit is arranged to permit staging
- Compatible with heat pumps and variable-capacity cooling applications
- Fully painted cabinet with attractive Architectural Gray paint finish

Model	Nominal Cooling Capacity (BTUH)	Voltage	CFM High/Low	Electric Heat Capacity (kW)	Dimensions W x D x H	Service Valve		Shipping Weight (pounds)
						Liquid	Suction	
AEPT030-00C-1A	24,000 - 30,000	208/240	1,200/600	5, 8, 10	19½" x 22" x 46¾"	3/8"	3/4"	147
AEPT036-00C-1A	36,000	208/240	1,300/1,200	8, 10, 15	22" x 24" x 53¼"	3/8"	7/8"	176
AEPT060-00C-1A	48,000 - 60,000	208/240	2,000/1,200	10, 15, 20, 21	22" x 24" x 53¼"	3/8"	7/8"	195

ARPT/ARPF Series

2 to 5 Ton



The Goodman® ARPT features a factory-installed, internally mounted TXV, while the Goodman® ARPF features a check flowrate expansion device. These units may be installed in a variety of locations.

- ARPT (upflow/horizontal) includes a factory-installed, internally mounted TXV
- ARPF (downflow) includes a check flowrate expansion device
- Direct-drive, multi-speed motor allows air volume variation for heating/cooling
- Built-in coil has horizontal, vertical and downflow drain pans with secondary drain connections
- Built-in filter rack for 1" filter (filter not included)
- Power supply entry at top; low-voltage entry on left side and top
- Transformer and blower time delay on all units
- 3 kW to 20 kW electric heat is available as a field-installed accessory
- Factory-sealed models (ARPT) achieve a 2% or less leakage rate at 1.0" water gauge external duct static pressure
- ARPT models comply with the Factory-sealed Air Handling Credit as listed in the 2001 Florida Building Code, Chapter 13, Section 610.2.A.2.1
- Fully painted cabinet with attractive Architectural Gray paint finish

Model	Nominal Cooling Capacity (BTUH)	Voltage	CFM @ 0.3" ESP High/Low	Electric Heat Capacity (kW)	Dimensions W x D x H	Service Valve		Shipping Weight (pounds)
						Liquid	Suction	
ARPT024-00C-1A	24,000	208/240	980/880	3, 5, 6, 8, 10	15½" x 22" x 41⅛"	3/8"	3/4"	106
ARPT032-00C-1A	30,000	208/240	1,980/1,040	3, 5, 6, 8, 10, 15	15½" x 22" x 41⅛"	3/8"	3/4"	120
ARPT032-00C-1B	30,000	208/240	1,020/570	3, 5, 6, 8, 10, 15	15½" x 22" x 41⅛"	3/8"	3/4"	120
ARPT036-00C-1A	36,000	208/240	1,420/1,280	3, 5, 6, 8, 10, 15, 20	19½" x 22" x 46¾"	3/8"	3/4"	141
ARPT042-00C-1A	42,000	208/240	1,470/1,420	3, 5, 6, 8, 10, 15, 20	19½" x 22" x 46¾"	3/8"	3/4"	144
ARPT049-00C-1A	48,000	208/240	1,530/1,460	3, 5, 6, 8, 10, 15, 20	22" x 24" x 53¼"	3/8"	7/8"	173
ARPT061-00C-1A	60,000	208/240	2,000/1,780	3, 5, 6, 8, 10, 15, 20	22" x 24" x 53¼"	3/8"	7/8"	192
ARPF024-00B-1A	24,000	208/240	980/880	3, 5, 6, 8, 10	15½" x 22" x 41⅛"	3/8"	3/4"	106
ARPF036-00B-1A	36,000	208/240	1,980/1,040	3, 5, 6, 8, 10, 15, 20	15½" x 22" x 41⅛"	3/8"	3/4"	141
ARPF048-00B-1A	48,000	208/240	1,530/1,460	3, 5, 6, 8, 10, 15, 20	22" x 24" x 53¼"	3/8"	3/4"	173
ARPF060-00B-1A	60,000	208/240	2,000/1,780	3, 5, 6, 8, 10, 15, 20	22" x 24" x 53¼"	3/8"	7/8"	192

ARUF Series

1½ to 5 Ton



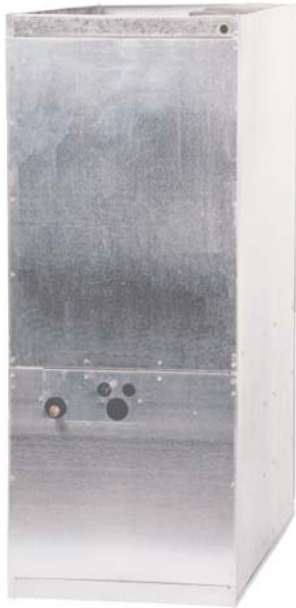
The Goodman® ARUF Multi-Position Electric Heat Air Handler is approved for modular homes. The ARUF features a check flowrate expansion device. This unit is housed in a rust-resistant, fully insulated steel cabinet with a galvanized, stucco-embossed finish and painted front panels, and it may be installed in a variety of locations.

- Check flowrate expansion device for cooling-only and heat pump applications
- Direct-drive, multi-speed motor allows air volume variation for heating/cooling
- Built-in coil has horizontal, vertical and downflow drain pans with secondary drain connections
- Built-in filter rack for 1" filter (filter not included)
- Power supply entry at top; low-voltage entry on left side and top
- Transformer and blower time delay on all units
- 3 kW to 20 kW electric heat is available as a field-installed accessory
- Fully insulated cabinet with attractive Architectural Gray painted front panels

Model	Nominal Cooling Capacity (BTUH)	Voltage	CFM @ 0.3" ESP High/Low	Electric Heat Capacity (kW)	Dimensions W x D x H	Service Valve		Shipping Weight (pounds)
						Liquid	Suction	
ARUF018-00A-1A	18,000	208/240	580/550	3, 5, 6, 8	15½" x 22" x 41⅛"	3/8"	5/8"	105
ARUF024-00A-1A	24,000	208/240	980/880	3, 5, 6, 8, 10	15½" x 22" x 41⅛"	3/8"	3/4"	106
ARUF030-00A-1A	30,000	208/240	1,040/980	3, 5, 6, 8, 10, 15	15½" x 22" x 41⅛"	3/8"	3/4"	113
ARUF032-00A-1B	30,000	208/240	1,020/570	3, 5, 6, 8, 10, 15	15½" x 22" x 41⅛"	3/8"	3/4"	120
ARUF036-00A-1A	36,000	208/240	1,420/1,280	3, 5, 6, 8, 10, 15, 20	19½" x 22" x 46¾"	3/8"	3/4"	141
ARUF042-00A-1A	42,000	208/240	1,470/1,420	3, 5, 6, 8, 10, 15, 20	19½" x 22" x 46¾"	3/8"	3/4"	144
ARUF048-00A-1A	48,000	208/240	1,530/1,470	3, 5, 6, 8, 10, 15, 20	22" x 24" x 53¼"	3/8"	3/4"	173
ARUF049-00A-1A	48,000	208/240	1,530/1,470	3, 5, 6, 8, 10, 15, 20	22" x 24" x 53¼"	3/8"	7/8"	173
ARUF060-00A-1A	60,000	208/240	2,000/1,780	3, 5, 6, 8, 10, 15, 20	22" x 24" x 53¼"	3/8"	7/8"	192
ARUF061-00A-1A	60,000	208/240	2,000/1,780	3, 5, 6, 8, 10, 15, 20	22" x 24" x 53¼"	3/8"	7/8"	192

AR Commercial Series

7½ to 10 Ton



The Goodman® AR Commercial Multi-Position Electric Heat Air Handler features a TXV. The 10-ton model is circuited for use with two 4- or 5-ton cooling-only or heat pump systems, or one 10-ton cooling-only or heat pump system. For indoor applications, all models are convertible to 460-3-60 from 208/230-3-60. The heavy-gauge, reinforced G-90 galvanized-steel cabinet with removable access panels makes servicing the unit faster and easier. The cabinet is insulated with a fiberglass blanket.

- TXV control; 10-ton model has two TXVs
- Draw-thru centrifugal blower is belt-driven for quiet, efficient operation
- Horizontal and vertical condensate pans
- Built-in filter rack for 2" filter (filter included)
- Entry on top of panel for both low and high voltage
- Transformer and blower relay
- 15 kW to 30 kW electric heat is available as a field-installed accessory



Model	Nominal Cooling Capacity (BTUH)	Voltage-Phase	CFM	Electric Heat Capacity (kW)	Dimensions W x D x H	Service Valve		Shipping Weight (pounds)
						Liquid	Suction	
AR090	90,000	208/230/460-3	3,000	15, 20, 30	48½" x 24" x 60½"	5/8"	1½"	405
AR120	120,000	208/230/460-3	4,000	15, 20, 30	48½" x 24" x 60½"	3/8" *	1½" *	430

* For two refrigerant lines

AWB Series

1½ to 3 Ton



The Goodman® AWB Electric Heat Air Handler is designed to be vertically wall- or stud-mounted. This unit is housed in a fully insulated, galvanized-steel cabinet.

- Check flowrate for cooling only and heat pump operation
- Direct-drive, multi-speed motor allows air volume variation for heating/cooling
- Thermoplastic drain pan with bottom primary/secondary drain connection
- Built-in filter rack (filter included)
- Factory-installed pull-type disconnect
- Large chassis (3-ton units) – front return only; small chassis (1½-, 2- and 2½-ton units) – front or bottom return
- Sequence-controlled, rust-resistant nickel chromium heating elements of 5, 8 and 10 kW
- Wall-hanging bracket provided

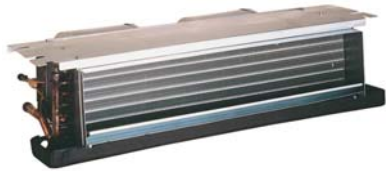


Model	Nominal Cooling Capacity (BTUH)	Voltage	CFM @ 0.3" ESP High/Low	Electric Heat Capacity (kW)	Dimensions W x D x H	Service Valve		Shipping Weight (pounds)
						Liquid	Suction	
AWB18-05	18,000	240/208	730/720	5	20 ³ / ₁₆ " x 16 ¹ / ₈ " x 36"	3/8"	5/8"	81
AWB18-08	18,000	240/208	730/720	8	20 ³ / ₁₆ " x 16 ¹ / ₈ " x 36"	3/8"	5/8"	81
AWB24-05	24,000	240/208	830/800	5	20 ³ / ₁₆ " x 16 ¹ / ₈ " x 36"	3/8"	5/8"	84
AWB24-08	24,000	240/208	830/800	8	20 ³ / ₁₆ " x 16 ¹ / ₈ " x 36"	3/8"	5/8"	84
AWB24-10	24,000	240/208	830/800	10	20 ³ / ₁₆ " x 16 ¹ / ₈ " x 36"	3/8"	5/8"	84
AWB30-05	30,000	240/208	1,020/900	5	20 ³ / ₁₆ " x 16 ¹ / ₈ " x 36"	3/8"	5/8"	84
AWB30-08	30,000	240/208	1,020/900	8	20 ³ / ₁₆ " x 16 ¹ / ₈ " x 36"	3/8"	5/8"	84
AWB30-10	30,000	240/208	1,020/900	10	20 ³ / ₁₆ " x 16 ¹ / ₈ " x 36"	3/8"	5/8"	84
AWB36-05CFR*	36,000	240/208	1,110/1,030	5	24" x 21" x 36"	3/8"	3/4"	96
AWB36-08CFR*	36,000	240/208	1,110/1,030	8	24" x 21" x 36"	3/8"	3/4"	96
AWB36-10CFR*	36,000	240/208	1,110/1,030	10	24" x 21" x 36"	3/8"	3/4"	96

* Front return only

AC Series

1½ to 3 Ton



The Goodman® AC Electric Heat Air Handler is designed to be ceiling-mounted. This unit has galvanized-steel construction and quiet operation.

- Check flowrate for heat pump and cooling-only applications
- Direct-drive, resilient-mount, multi-speed motor
- Primary/secondary drain connection in a high temperature plastic drain pan
- Factory-installed pull-type disconnect
- Sequence-controlled and rust-resistant nickel chromium heating elements of 5, 6, 8 and 10 kW
- High-efficiency evaporator coil
- Quiet operation
- Easy service access
- ARI-rated matched systems at 10 and 12 SEER
- Available with and without heat

Model	Nominal Cooling Capacity (BTUH)	Voltage	CFM @ 0.2" ESP High/Low	Electric Heat Capacity (kW)	Dimensions W x D x H	Service Valve		Shipping Weight (pounds)
						Liquid	Suction	
AC18-00	18,000	208/230	710/590	0	37¼" x 21" x 10"	3/8"	5/8"	56
AC18-05	18,000	208/230	710/540	5	37¼" x 21" x 10"	3/8"	5/8"	59
AC18-06	18,000	208/230	710/590	6	37¼" x 21" x 10"	3/8"	5/8"	59
AC18-08	18,000	208/230	710/590	8	37¼" x 21" x 10"	3/8"	5/8"	59
AC24-00	24,000	208/230	880/680	0	37¼" x 21" x 10"	3/8"	3/4"	56
AC24-05	24,000	208/230	880/680	5	37¼" x 21" x 10"	3/8"	3/4"	59
AC24-06	24,000	208/230	880/680	6	37¼" x 21" x 10"	3/8"	3/4"	59
AC24-08	24,000	208/230	880/680	8	37¼" x 21" x 10"	3/8"	3/4"	59
AC24-10	24,000	208/230	880/680	10	37¼" x 21" x 10"	3/8"	3/4"	59
AC30-00	30,000	208/230	1,020/790	0	43¼" x 21" x 10"	3/8"	3/4"	66
AC30-05	30,000	208/230	1,020/790	5	43¼" x 21" x 10"	3/8"	3/4"	69
AC30-08	30,000	208/230	1,020/790	8	43¼" x 21" x 10"	3/8"	3/4"	69
AC30-10	30,000	208/230	1,020/790	10	43¼" x 21" x 10"	3/8"	3/4"	69
AC36-00	36,000	208/230	1,150/880	0	49¼" x 21" x 10"	3/8"	3/4"	76
AC36-05	36,000	208/230	1,150/880	5	49¼" x 21" x 10"	3/8"	3/4"	79
AC36-08	36,000	208/230	1,150/880	8	49¼" x 21" x 10"	3/8"	3/4"	79
AC36-10	36,000	208/230	1,150/880	10	49¼" x 21" x 10"	3/8"	3/4"	79

AH Series

1½ to 3 Ton



Large Chassis



Small Chassis

The Goodman® AH Hydronic Heat Air Handler is designed to be vertically wall- or stud-mounted. The AH features a check flowwater expansion device. This unit is housed in an insulated, galvanized-steel cabinet and may be installed in conjunction with a water heater.

- Check flowwater for cooling only and heat pump operation
- Direct-drive, multi-speed motor to permit air volume flexibility
- Models available with factory-installed freeze protection
- Thermoplastic drain pan with bottom primary/secondary drain connection
- Built-in filter rack (filter included)
- Large chassis (2½- and 3-ton units) – front return only; small chassis (1½- and 2-ton units) – front or bottom return
- Factory-installed hydronic coil, circulator pump and check valve
- Secondary check valve included for field installation
- Blower-door safety switch
- Wall-hanging bracket provided



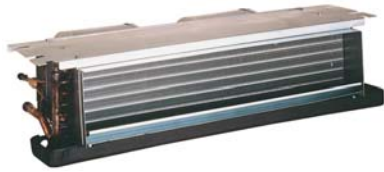
Model	Nominal Cooling Capacity (BTUH)	Voltage	CFM @ 0.3" ESP High/Med./Low	Hydronic Heat Capacity @ 140 °F	Dimensions W x D x H	Service Valve		Shipping Weight (pounds)
						Liquid	Suction	
AH1826-1/-1FP	18,000	115	680/640/570	26,000	20 ³ / ₁₆ " x 16 ¹ / ₈ " x 39 ³ / ₄ "	3/8"	5/8"	95
AH2429-1/-1FP	24,000	115	780/720/640	29,000	20 ³ / ₁₆ " x 16 ¹ / ₈ " x 39 ³ / ₄ "	3/8"	5/8"	100
AH3043-1FR/-1FRFP	30,000	115	1,020/960/860	43,000	24" x 21" x 44 ¹ / ₄ "	3/8"	3/4"	135
AH3645-1FR/-1FRFP	36,000	115	1,190/1,060/950	45,000	24" x 21" x 44 ¹ / ₄ "	3/8"	3/4"	140

FP = Model includes factory-installed freeze protection

FR = Front return only

ACHP Series

1½ to 3 Ton



The Goodman® ACHP Hydronic Heat Air Handler is designed to be ceiling-mounted. The ACHP features a check flowrate expansion device. This unit has galvanized-steel construction and is designed for applications with direct expansion cooling.

- Check flowrate expansion device for heat pump application
- Direct-drive, resilient-mount, multi-speed motor
- Primary/secondary drain connection on high-temperature plastic drain pan (3-ton units have painted galvanized-steel drain pans)
- Factory-installed circulating pump with check valve and boiler drain
- Factory-installed hydronic coils
- Models available with factory-installed freeze protection
- High-efficiency evaporator coil
- Quiet operation
- Easy service access
- Steel blower wheels
- ARI-rated matched systems at 10 and 12 SEER
- Galvanized-steel construction
- Available factory-painted access panels

Model	Nominal Cooling Capacity (BTUH)	Voltage	CFM @ 0.2" ESP High/Low	Hydronic Heat Capacity @ 140 °F	Dimensions W x D x H	Service Valve		Shipping Weight (pounds)
						Liquid	Suction	
ACHP1819-1/-1FP	18,000	115	620/530	18,400	40¼" x 21" x 10"	3/8"	5/8"	65
ACHP2423-1/-1FP	24,000	115	770/710	23,000	40¼" x 21" x 10"	3/8"	3/4"	65
ACHP3028-1/-1FP	30,000	115	1,030/940	27,300	46¼" x 21" x 10"	3/8"	3/4"	75
ACHP3632-1/-1FP	36,000	115	1,130/830	32,000	58" x 21" x 10"	3/8"	3/4"	105

FP = Model includes factory-installed freeze protection

CAUF Series

Uncased Upflow/Downflow Indoor Coils



The Goodman® CAUF Uncased Upflow/Downflow Indoor Coils are made for split system air conditioners and heat pumps.

- Rust-resistant, high-temperature, thermoplastic drain pans feature a low water retention design
- Check flowrater expansion device for cooling-only and heat pump applications
- Rifled copper tubing and wave-pattern aluminum fin coil



Model	Dimensions		Specifications				
	Width	Height	Nominal Tons	No. of Rows	Liquid Connection	Suction Connection	Shipping Weight (pounds)
CAUF018A2*	13"	16¼"	1½	2	3/8"	5/8"	18
CAUF024A2*	13"	16⅝"	2	2	3/8"	3/4"	21
CAUF030A2*	13"	18⅝"	2½	3	3/8"	3/4"	24
CAUF036A2A	13"	20"	3	3	3/8"	3/4"	31
CAUF036A2B	13"	20"	3	2	3/8"	3/4"	30
CAUF018B2*	16½"	16⅝"	1½	2	3/8"	5/8"	18
CAUF025B2*	16½"	16¼"	2	3	3/8"	3/4"	21
CAUF030B2*	16½"	16⅝"	2½	3	3/8"	3/4"	24
CAUF036B2A	16½"	20"	3	3	3/8"	3/4"	31
CAUF036B2B	16½"	20"	3	2	3/8"	3/4"	31
CAUF036C2*	20"	20"	3	2	3/8"	3/4"	34
CAUF037B2*	16½"	20"	3	3	3/8"	3/4"	31
CAUF037C2A	20"	18"	3	3	3/8"	3/4"	43
CAUF042B2*	16½"	19 ¹⁵ / ₁₆ "	3½	3	3/8"	3/4"	43
CAUF048B2*	16½"	23 ¹⁵ / ₁₆ "	4	3	3/8"	7/8"	44
CAUF042C2*	20"	21 ⁷ / ₁₆ "	3½	3	3/8"	3/4"	43
CAUF048C2*	20"	23½"	4	3	3/8"	7/8"	44
CAUF049C2*	20"	23¾"	4	3	3/8"	7/8"	44
CAUF060C2*	20"	27 ¹⁵ / ₁₆ "	5	3	3/8"	7/8"	55
CAUF061C2*	20"	27 ¹⁵ / ₁₆ "	5	4	3/8"	7/8"	55
CAUF049D2*	23"	23¾"	4	3	3/8"	7/8"	44
CAUF060D2*	23"	28¼"	5	3	3/8"	7/8"	55
CAUF061D2*	23"	27¾"	5	4	3/8"	7/8"	60

CAPF Series

Painted Cased Upflow/Downflow Indoor Coils



The Goodman® CAPF Painted Cased Upflow/Downflow Indoor Coils are made for split system air conditioners and heat pumps. Each coil is constructed of quality, galvanized steel.

- Rust-resistant, high-temperature, thermoplastic drain pans feature a low water retention design
- Check flowrater expansion device for cooling-only and heat pump applications
- Expansion Valve Kit available as a field-installed accessory
- Rifled copper tubing and wave-pattern aluminum fin coil
- Foil-face insulation
- Split-seam front for excellent access
- High-quality post-paint cabinet with attractive Architectural Gray paint finish

Model	Dimensions			Specifications				
	Width	Height	Plenum Opening Width	Nominal Tons	No. of Rows	Liquid Connection	Suction Connection	Shipping Weight (pounds)
CAPF018A2*	14"	18"	13"	1½	2	3/8"	5/8"	31
CAPF018B2*	17½"	18"	16½"	1½	2	3/8"	5/8"	33
CAPF024A2*	14"	18"	13"	2	2	3/8"	3/4"	33
CAPF025B2*	17½"	18"	16½"	2	3	3/8"	3/4"	35
CAPF030A2*	14"	18"	13"	2½	3	3/8"	3/4"	38
CAPF030B2*	17½"	18"	16½"	2½	3	3/8"	3/4"	42
CAPF036A2*	14"	22"	13"	3	2	3/8"	3/4"	38
CAPF036B2A	17½"	22"	16½"	3	3	3/8"	3/4"	48
CAPF036B2C	17½"	22"	16½"	3	2	3/8"	3/4"	48
CAPF036C2A	21"	26"	20	3	3	3/8"	3/4"	55
CAPF036C2B/C	21"	26"	20	3	2	3/8"	3/4"	55
CAPF037B2*	17½"	22"	16½"	3	3	3/8"	3/4"	48
CAPF037C2A	21"	26"	20	3	3	3/8"	3/4"	65
CAPF042B2*	17½"	22"	16½"	3½	3	3/8"	3/4"	60
CAPF042C2*	21"	26"	20	3½	3	3/8"	3/4"	65
CAPF048B2*	17½"	22"	16½"	4	3	3/8"	7/8"	55
CAPF048C2A	21"	26"	20	4	3	3/8"	7/8"	65
CAPF049C2*	21"	26"	20	4	3	3/8"	7/8"	57
CAPF049D2*	24½"	26"	23½"	4	3	3/8"	7/8"	58
CAPF060C2*	21"	30"	20	5	3	3/8"	7/8"	61
CAPF060D2*	24½"	30"	23½"	5	3	3/8"	7/8"	68
CAPF061C2*	21"	30"	20	5	4	3/8"	7/8"	68
CAPF061D2*	24½"	30"	23½"	5	4	3/8"	7/8"	75

CHPF Series

Painted Cased Horizontal “A” Indoor Coils



The Goodman® CHPF Painted Cased Horizontal “A” Indoor Coils are made for split system air conditioners and heat pumps. Each coil is constructed of quality, galvanized steel.

- Rust-resistant, high-temperature, thermoplastic drain pans feature a low water retention design
- Check flowrate expansion device for cooling-only and heat pump applications
- Expansion Valve Kit available as a field-installed accessory
- Rifled copper tubing and wave-pattern aluminum fin coil
- Foil-face insulation
- Split-seam front for excellent access
- High-quality post-paint cabinet with attractive Architectural Gray paint finish



Model	Dimensions					Specifications						
	Width	Depth	Height	Plenum Opening Width	Plenum Opening Height	Evap Coil Face Area (ft ²)	No. of Rows	Fins Per Inch	Primary Auxiliary Drain	Liquid Connection	Suction Connection	Shipping Weight (pounds)
CHPF024A2*	21 ¹ / ₈ "	26"	14"	19"	13"	3.33	2	14	3/4"	3/8"	3/4"	40
CHPF025B2*	21 ¹ / ₈ "	26"	17 ¹ / ₂ "	19"	16 ¹ / ₂ "	3.56	2	14	3/4"	3/8"	3/4"	48
CHPF030A2*	21 ¹ / ₈ "	26"	14"	19"	13"	3.33	3	14	3/4"	3/8"	3/4"	45
CHPF036B2*	21 ¹ / ₈ "	26"	17 ¹ / ₂ "	19"	16 ¹ / ₂ "	4.44	2	14	3/4"	3/8"	3/4"	50
CHPF042B2*	21 ¹ / ₈ "	26"	17 ¹ / ₂ "	19"	16 ¹ / ₂ "	4.44	3	14	3/4"	3/8"	3/4"	55
CHPF048C2*	21 ¹ / ₈ "	26"	21"	19"	20"	4.88	3	14	3/4"	3/8"	7/8"	60
CHPF048D2*	21 ¹ / ₈ "	26"	24 ¹ / ₂ "	19"	23 ¹ / ₂ "	5.96	3	14	3/4"	3/8"	7/8"	65
CHPF060D2*	21 ¹ / ₈ "	26"	24 ¹ / ₂ "	19"	23 ¹ / ₂ "	5.96	4	14	3/4"	3/8"	7/8"	70

H Series

Horizontal Slab Evaporator Coils



The Goodman® H Horizontal Slab Evaporator Coils are made for split system air conditioners and heat pumps. Each coil has a quality, galvanized-steel finish.

- Rust-resistant, high-temperature, thermoplastic drain pans with a secondary drain connection
- Available with check flowrate expansion device or check TXV for cooling-only and heat pump applications
- Copper tube/aluminum fin coil
- Compact, versatile, right or left horizontal position
- Copper sweat connections



Model	Dimensions			Specifications				
	Width	Depth	Height	Nominal Tons	No. of Rows	Liquid Connection	Suction Connection	Shipping Weight (pounds)
H-24F	25½"	12"	25"	2.0	2	3/8"	3/4"	26
H-36F	25½"	12"	25"	3.0	3	3/8"	3/4"	42
H-49F	33½"	12"	25"	4.0	3	3/8"	7/8"	53
H-60F	39½"	12"	25"	5.0	3	3/8"	7/8"	58
H-61F	39½"	12"	25"	5.0	4	3/8"	7/8"	65

GHEPA/GDMHEPA Series

Whole-House True HEPA Air Cleaner



The Goodman® GHEPA/GDMHEPA Whole-House True HEPA Air Cleaners have been designed to help protect and prolong the operating efficiency of the heating and cooling equipment. The activated carbon pre-filter and the HEPA filter efficiently remove lint and unpleasant odors, atmospheric and household dust, coal dust, insecticides, dust mites, pollen, mold spores, fungi, bacteria, cooking smoke and grease, pet dander and tobacco smoke particles. While the GHEPA models are easily installed in a free-standing position, the GDMHEPA model has various installation options (duct-mounted, collar-mounted or free-standing).

- Certified true HEPA
- Removes 99.97% of odors and air contaminants down to 0.3 microns (1/84,000 of an inch)
- Heavy-gauge steel cabinet with powder-coat paint finish provides rigid installation and durability and resists corrosion
- Durable, attractive Architectural Gray powder-paint finish resists corrosion
- Replacement filters available; see table below

Model	Description	GHEPA650	GHEPA550	GHEPA450	GHEPA350	GDMHEPA400
W6-0840	True HEPA Filter Cylinder	X				
W6-0855	Carbon Prefilter Blanket	X				
W6-0810	Inner Carbon VOC Blanket	X				
W5-0860	True HEPA 6" Filter		X			
W5-0860-3	True HEPA Filter 6" Square		X			
W5-0810	Carbon Prefilter 1"		X			
W5-0820	Carbon VOC After Filter		X			
W5-0885	Carbon / Potass. VOC Filter		X			
W4-0840	True HEPA Filter Cylinder			X		
W4-0855	Carbon Prefilter Blanket			X		
W4-0810	Inner Carbon VOC Blanket			X		
W3-0840	True HEPA Filter Cylinder				X	
W3-0855	Carbon Prefilter Blanket				X	
W3-0810	Inner Carbon VOC Blanket				X	
DMH4-0400	True HEPA Filter					X
DMH4-0855	Pre-Filter					X
DMH4-0810	Carbon Pre-Filter					X

Model	CFM*	Whole-House Air Changes/Day		Cabinet Dimensions (W x D x H)	Intake Duct Fitting Diameter	Outflow Duct Fitting Diameter	Outflow Duct Fitting Reversible Openings	Power			Plug-in Power Cord	Weight (pounds)
		1,500 ft ²	2,500 ft ²					Voltage	Hz	Watts		
GHEPA350	245	30	18	18¼" x 18¼" x 19¼"	8"	6"	1	120	60	70	10'	38
GHEPA450	330	40	24	18" x 18" x 24½"	8"	6"	3	120	60	125	10'	51
GHEPA550	560	67	41	21½" x 20½" x 28"	12"	8"	2	120	60	215	10'	88
GHEPA650	540	65	39	18" x 18" x 30½"	12"	8"	2	120	60	215	10'	57
GDMHEPA400	320	39	29	16¼" x 12¾" x 20⅞"	8"	8"	2	120	60	125	9'	38

* With All Standard Filters Installed

Model	Certified True HEPA Filter**Long-Life Years	Carbon VOC Filter Description**
GHEPA350	2-3	Inner VOC After Filter
GHEPA450	2-4	Inner VOC After Filter
GHEPA550	3-5	Carbon/Potassium Permanganate VOC After Filter
GHEPA650	2-4	Inner VOC After Filter
GDMHEPA400	2-3	1.33 ft ² Prefilter

* 99.97% efficient on 0.3 micron

** For removal of noxious odors and gases

GSAS Series

Whole-House, High-Efficiency Electronic Air Cleaner



The Goodman® GSAS Whole-House, High-Efficiency Electronic Air Cleaner is designed to protect and prolong the operating efficiency of the heating and cooling equipment. The air-proving switch detects airflow and energizes the air cleaner. With a 4-stage air cleaning process, pre-filters, charging section, grounding plates and carbon filters, the GSAS air cleaners efficiently remove atmospheric and household dust, coal dust, insecticides, dust mites, pollen, mold spores, fungi, bacteria, cooking smoke and grease, pet dander and tobacco smoke particles.

- Environmentally-friendly Lifetime Filtration System electronically removes lung-damaging air pollutants down to 0.01 micron (1/2,540,000 of an inch)
- Carbon filters remove odors
- Dual indicator lights show unit operation at a glance
- Electronic Air Proving Switch cycles the air cleaner On/Off with the system fan
- Includes dual indicator lights
- Heavy-gauge galvanized steel cabinet provides trouble-free vertical or horizontal installation
- Durable powder-coat paint finish resists corrosion
- Replacement filters available; see table below

Model	Description
1156-3	Carbon Filters (set of 3) for GSAS-10 and GSAS-11
1856-3	Carbon Filters (set of 3) for GSAS-12 and GSAS-18

Model	House Size	CFM	Duct Size	Dimensions (W x D x H)	Power			Weight (pounds)
					Voltage	Hz	Watts	
GSAS-10	< 2,400 ft ²	Up to 1,200	16" x 20"	7½" x 21" x 23¾"	120	60	30	28
GSAS-11	< 3,000 ft ²	Up to 1,400	16" x 25"	7½" x 21" x 26½"	120	60	30	30
GSAS-12	< 3,000 ft ²	Up to 1,400	20" x 20"	7½" x 25 ^{22/25} " x 21¾"	120	60	30	33
GSAS-18	> 3,000 ft ²	Up to 2,000	20" x 25"	7½" x 25 ^{22/25} " x 26½"	120	60	30	38

G1EAC Series

Charged-Media Electronic Air Cleaner



The Goodman® G1EAC Charged-Media Electronic Air Cleaner provides a 24-volt, polarized charge on the media pads to capture and remove airborne particles. Contributing to the air cleaner’s reliable operation is its carbon-graphite center charging screen, which is permanently mounted to the air cleaner frame. Attached to each of the frame’s four corners, internal center screen spacers are open faced to maximize air flow. For added durability, a one-piece, injection-molded power head is “capped” and sealed to be watertight.

- Highest efficiency in the industry for a 1” electronic air cleaner; fits into any one-inch filter opening
- Does not produce hazardous ozone or positive ions
- Operates quietly to create a cleaner, healthier environment
- Fully electronic, reliable, high-efficiency carbon-graphite center screen removes particles as small as .001 microns and helps remove pollen, mold spores, animal dander, smoke and lung damaging dust
- Uses a small amount of electrical current, avoiding system overload
- Efficiency increases as the air cleaner is operating
- Designed to operate with constant power or with the system’s fan to permit reliable, long-term performance
- Easily removable, high-density, multi-layered replacement media pads feature high dust-holding capacities and low-static pressure curves to provide optimum performance
- Easy to install, maintain and service
- Fits all central HVAC residential systems
- Notched, recessed and insulated center charging pin eliminates improves transfer and performance and quieter operation
- Stainless-steel latches provide durability
- Corrosion-resistant construction for a thin, trouble-free installation
- Open-face design maintains low static pressure
- Independently tested and certified
- MERV-10 Rated Efficiency (ASHRAE Standard 52.2)

Model	Pressure Drop @ 300 FPM (W.G.)	Power			Dimensions			Net / Shipping Weight (pounds)
		Voltage	Ampacity	Watts	Width	Depth	Height	
G1EAC-1224	.17”	24	.064	2	12”	1”	24”	2 / 3
G1EAC-1420	.17”	24	.064	2	14”	1”	20”	2 / 3
G1EAC-1424	.17”	24	.064	2	14”	1”	24”	2 / 3
G1EAC-1425	.17”	24	.064	2	14”	1”	25”	2 / 3
G1EAC-1430	.17”	24	.064	2	14”	1”	30”	2 / 3
G1EAC-1520	.17”	24	.064	2	15”	1”	20”	2 / 3
G1EAC-1620	.17”	24	.064	2	16”	1”	20”	2 / 3
G1EAC-1624	.17”	24	.064	2	16”	1”	24”	2 / 3
G1EAC-1625	.17”	24	.064	2	16”	1”	25”	2 / 3
G1EAC-1820	.17”	24	.064	2	18”	1”	20”	2 / 3
G1EAC-2020	.17”	24	.064	2	20”	1”	20”	2 / 3
G1EAC-2024	.17”	24	.064	2	20”	1”	24”	2 / 3
G1EAC-2025	.17”	24	.064	2	20”	1”	25”	2 / 3
G1EAC-2424	.17”	24	.064	2	24”	1”	24”	2 / 3
G1EAC-2030	.17”	24	.064	2	20”	1”	30”	2 / 3
G1EAC-2036	.17”	24	.064	2	20”	1”	36”	2 / 3
G1EAC-CUSTOM	.17”	24	.064	2	All Sizes up to 700 Square Inches			2 / 3

GMU Series

High-Efficiency Media Air Cleaner



The Goodman® GMU High-Efficiency, MERV 10 Charged-Media Retrofit Air Cleaner is designed to remove air contaminants down to 0.3 microns (1/84,000 of an inch). The GMU series helps protect and prolong the operating efficiency of the heating and cooling equipment. Its perfect fit allows no air gaps, thereby maximizing the system's ability to clean the air. The GMU's reversible airflow allows the filter to be mounted on any position. A user-friendly, easy-to-change filter means no fussing with complicated combs or brackets. The GMU air cleaners remove atmospheric and household dust, coal dust, insecticides, dust mites, pollen, mold spores, fungi, bacteria, cooking smoke and grease, pet dander and tobacco smoke particles.

- MERV 10 Filter removes particles as small as 0.3 micron (1/84,000 of an inch)
- Carbon filters remove odors
- Reversible airflow; mounts in any position
- Easy-to-change filter; no fussing with complicated combs or brackets
- Heavy-gauge galvanized steel cabinet provides trouble-free vertical or horizontal installation
- Durable, attractive Architectural Gray powder-paint finish resists corrosion
- Replacement filters available; see table below

Model	Description
M0-1056	Filter for GMU1620 (3 per carton)
M1-1056	Filter for GMU1625 (3 per carton)
M2-1056	Filter for GMU2020 (3 per carton)
M8-1056	Filter for GMU2025 (3 per carton)
1156-3	Carbon Filters (set of 3) for GMU1620/1625
1856-3	Carbon Filters (set of 3) for GMU2020/2025

Model	Pressure Drop		House Size	Duct Size	Intake Dimensions (H x D)	Dimensions (W x D x H)	MERV Rating	Weight (pounds)
	CFM @ .067" per WG	CFM @ .22" per WG						
GMU1620	600	1,200	<2,400 ft ²	16" x 20"	13 ⁵ / ₈ " x 20 ³ / ₄ "	7.5" x 23 ³ / ₄ " x 17"	10	17
GMU1625	700	1,400	<3,000 ft ²	16" x 25"	13 ⁵ / ₈ " x 24"	7.5" x 26 ¹ / ₂ " x 17"	10	18
GMU2020	700	1,400	<3,000 ft ²	20" x 20"	18" x 18 ³ / ₄ "	7.5" x 21 ³ / ₄ " x 22"	10	19
GMU2025	1,000	2,000	<3,000 ft ²	20" x 25"	18" x 23 ¹ / ₂ "	7.5" x 26 ¹ / ₂ " x 22"	10	20

HUM Series

Bypass and Fan-Powered Humidifier



The Goodman® HUM Bypass and Fan-Powered High-Capacity Humidifiers are a good choice for homes with warm-air heating systems. The durable thermoplastic cabinet resists rust, corrosion and warping and its UV-resistant plastic is Architectural Gray.

- Evaporator pad—with holes and connecting strands that significantly increase the evaporation surface—dispenses water evenly in front of a warm air stream to evaporate and raise the humidity level efficiently
- Designed to fit today’s narrower plenums, as narrow as 10” (HUM-SFTBP) and 14” (HUM-LFTBP, HUM-FP)
- Reversible side panels with unique snap-lock fittings permit easy-change; left-side or right-side bypass installation (HUM-SFTBP, HUM-LFTBP)
- Ideal for installations where the return air plenum is not easily accessible (HUM-FP)
- Summer Shut-off Damper reduces bypass air through the humidifier during the summer months allowing the air conditioner to run more efficiently and economically (HUM-SFTBP, HUM-LFTBP)
- Improved wicking and water distribution system accommodates non-level plenums
- Creates a purified, contaminant-free vapor for indoor air, which may improve your family’s health and comfort
- Low profile makes unit ideal where space is limited

Model	Description	Moisture Output Capacity			Dimensions					Weight (pounds)
		Pound per Hour	Gallons Per Hour @ 120 °F (GPH)	Gallons Per Day (GPD)	Width	Depth	Height	Plenum Opening (H x W)	Bypass Opening Diameter	
HUM-SFTBP	Small, Flow-Thru Bypass	4.84	0.58	14	9 ⁵ / ₈ ”	12 ¹ / ₂ ”	13 ¹ / ₂ ”	10” x 9”	6”	10
HUM-LFTBP	Large, Flow-Thru Bypass	6.26	0.75	18	9 ⁵ / ₈ ”	13 ³ / ₄ ”	18 ⁵ / ₈ ”	16 ⁵ / ₈ ” x 10 ⁵ / ₈ ”	6”	11
HUM-FP	Fan-Powered Flow-Thru	6.60	0.79	19	9 ⁵ / ₈ ”	13 ³ / ₄ ”	18 ⁵ / ₈ ”	16 ⁵ / ₈ ” x 13 ⁵ / ₈ ”	N/A	15

HRV/ERV Series

Heat/Energy Recovery Ventilator



The Goodman® HRV/ERV Heat/Energy Recovery Ventilators are easy to install and service. The fully insulated cabinet with 1” high-density, polystyrene foam insulation prevents condensation and meets the requirements of the UL 94 HF and is constructed of 22-gauge galvanized-steel with powder coat paint finish (HRV-150 and HRV-150D are 24-gauge).

- Two German-manufactured, factory-balanced EBM™ external rotor motors with backward-curved blades
- Motors have permanently lubricated sealed bearings
- Energy-efficient, polypropylene heat recovery ventilator core and enthalpy energy recovery ventilator core are configured for efficient cross-flow ventilation and are designed to withstand extreme temperature variations (HRV-300D has 2 cores)
- Washable, electrostatic, panel-type air filters (2)
- External, 3-position (Low/Stand By/Medium) rocker switch offers continuous ventilation
- State-of-the-art control boards provide easy connection to existing HVAC equipment
- Unit can be serviced through an easy-access, latched access door
- Core conveniently slides out with ease on an improved railing (channel guide) system
- Service light indicator and external electrical box allows for easy servicing and maintenance
- Screw-type dial on electrical box allows supply air to be adjusted to match exhaust air flow and uses the “TRUE” motor adjustment feature (HRV-150D, HRV-200D only)
- Efficient power
- Optional remote controls provide easy operation
- Advanced Defrost Cycle strategy
- Unit may be installed using the factory-supplied installation kit, which includes mounting bolts for the top 4 corners of the unit or suspended with chains and hooks

Model	Recovery Ventilator Type	CFM	Power*			Dimensions						Core Size/ Filter Size	Weight (pounds)
			Voltage	Amps	Watts	Width	Depth	Height	Supply/ Exhaust Diameter	External Vent Depth	Internal Vent Depth		
HRV-150	Heat	123	120	1.5	150	17 ³ / ₈ "	23 ¹ / ₂ "	16 ⁵ / ₈ "	6"	2 ¹ / ₄ "	2 ⁵ / ₈ "	9" x 9" x 15" 8 ¹ / ₂ " x 15" x 1 ¹ / ₈ "	49
HRV-200	Heat	168	120	1.9	150	17 ³ / ₈ "	27 ⁷ / ₈ "	20 ¹ / ₂ "	6"	2 ¹ / ₄ "	2 ⁵ / ₈ "	12" x 12" x 15" 11 ³ / ₄ " x 15" x 1 ¹ / ₈ "	66
HRV-150D	Heat (Defrost)	123	120	1.5	150	17 ³ / ₈ "	23 ¹ / ₂ "	17 ³ / ₈ "	6"	2 ¹ / ₄ "	2 ⁵ / ₈ "	9" x 9" x 15" 8 ¹ / ₂ " x 15" x 1 ¹ / ₈ "	51
HRV-200D	Heat (Defrost)	168	120	1.9	150	17 ³ / ₈ "	27 ⁷ / ₈ "	20 ¹ / ₂ "	6"	2 ¹ / ₄ "	2 ⁵ / ₈ "	12" x 12" x 15" 11 ³ / ₄ " x 15" x 1 ¹ / ₈ "	66
HRV-300D	Heat (Defrost)	247	120	2.7	150	17 ³ / ₈ "	50 ⁷ / ₈ "	22 ¹ / ₅ "	6"	2 ¹ / ₄ "	2 ¹ / ₄ "	12" x 12" x 15" 11 ³ / ₄ " x 15" x 1 ¹ / ₈ "	125
ERV-150	Energy	135	120	1.5	150	17 ³ / ₈ "	23 ¹ / ₂ "	16 ¹ / ₄ "	6"	2 ¹ / ₄ "	2 ⁵ / ₈ "	9" x 9" x 15" 8 ¹ / ₂ " x 15" x 1 ¹ / ₈ "	49
ERV-200	Energy	155	120	1.9	150	17 ³ / ₈ "	27 ⁷ / ₈ "	20 ¹ / ₂ "	6"	2 ¹ / ₄ "	2 ⁵ / ₈ "	12" x 12" x 15" 11 ³ / ₄ " x 15" x 1 ¹ / ₈ "	66

UVX Series

Ultraviolet Air and Object Purifier



The Goodman® UVX Ultraviolet Air and Object Purifiers are ideal for offices, lounges, smoking rooms, day care centers and any location where clean air is desired. Specific units come with a high-intensity, 19mm, quartz, germicidal UVC lamp (UVX-PR Series) and UVC/UVV germicidal oxidizing lamp (UVX-DM Series). Units also feature the ultra-bright LED “Smart Lamp System” visual display.

Features for UVX-DM1700/UVX-DM4000 – Air Purifier

- Destroys chemical and biological odors, including bacteria, viruses, mold and volatile organic compounds (VOC)
- Larger, high-intensity UVC/UVV 19mm, quartz, dualzone lamp for more purifying area
- Easy, one-lever lamp clamp
- Patented, high-efficiency aluminum Turbulator at reflector inlet slows contaminated air to be mixed around the UV lamp for purification
- Aluminum reflector can be rotated in 90 degree increments on the back plate
- Designed to be installed in the return plenum
- Most effective UV air purification system on the market
- Hardwired to HVAC System
- In-duct installation for whole-house purification
- “Plug & Play” Operation; pressure sensor automatically turns purifier On and Off (UVX-DM4000)

Features for UVX-PR12/UVX-PR18 – Object Purifier

- Destroys bacteria, mold, viruses and biological odors
- Patent-pending, aluminum parabolic reflector directs and intensifies all the UV energy to the desired area, ensuring a coil free of microbial growth
- Parabolic reflector can be rotated 360 degrees around the lamp
- Multi-Installation – above or inside the A-coil keeps it free of biological contaminants, including mold and fungus; the patented parabolic reflector is designed to protect the drain pan from UV degradation
- Lamp available in 12” and 18” lengths

Model	Description	House Size	UV Intensity Inside Reflector (microwatts per/cm ²)	Power		Dimensions			Weight (pounds)
				Voltage	Hz	Width	Depth	Height	
UVX-PR12	Object Purifier/Probe Style	N/A	N/A	110/220	50/60	7"	12"	7"	3
UVX-PR18	Object Purifier/Probe Style	N/A	N/A	110/220	50/60	7"	18"	7"	3
UVX-DM1700	Air Purifier/Duct-mounted	<1,700 ft ²	10,212	110/220	50/60	7"	9"	7"	4½
UVX-DM4000	Air Purifier/Duct-mounted	<4,000 ft ²	16,479	110/220	50/60	7"	12"	7"	8

“Rip-Stop” Silver Jacket



The Quietflex® “Rip-Stop” Silver Jacket Flex Duct has a metallic, polyester-vapor barrier with a special “rip-stop” scrim reinforcement. Standard diameters are available in 3” to 22” with 25’ per bag.

- Bags require 20% less warehouse space
- Weather-resistant
- Easy to carry: up to 10” strapped together to form pairs
- Quick cleanup and easy disposal
- Temperature range is -20 °F to 200 °F intermittent
- Oversized core to fit on collars and register boxes
- Most federal, state and local codes and standards
- Also available in boxes
- Meets UL Standard 181
- ASTM C-518 – Dynamic
- HUD/FHA standards 515.2.1 Paragraph B
- NFPA standards 90A and 90B

Series	R-Value	Diameter													
		3”	4”	5”	6”	7”	8”	9”	10”	12”	14”	16”	18”	20”	22”
40	4.2	X	X	X	X	X	X	X	X	X	X	X	X	X	X
80	6.0	X	X	X	X	X	X	X	X	X	X	X	X	X	X
85	8.0	X	X	X	X	X	X	X	X	X	X	X	X	X	X

Customer Service: 877-694-3669

UV-Inhibited Black Jacket



The Quietflex® UV-Inhibited Black Jacket Flex Duct has a UV-inhibited polyethylene vapor barrier. Standard diameters are available in 4” to 20” with 25’ per bag.

- Bags require 20% less warehouse space
- Weather-resistant
- Easy to carry: up to 10” strapped together to form pairs
- Quick cleanup and easy disposal
- Temperature range is -20 °F to 200 °F intermittent
- Oversized core to fit on collars and register boxes
- Most federal, state and local codes and standards
- Also available in boxes
- Meets UL Standard 181
- ASTM C-518 – Dynamic
- HUD/FHA standards 515.2.1 Paragraph B
- NFPA standards 90A and 90B

Series	R-Value	Diameter											
		4”	5”	6”	7”	8”	9”	10”	12”	14”	16”	18”	20”
20	4.2	X	X	X	X	X	X	X	X	X	X	X	X
60	6.0	X	X	X	X	X	X	X	X	X	X	X	X
65	8.0	X	X	X	X	X	X	X	X	X	X	X	X

Customer Service: 877-694-3669

Mobile Home-Approved



The Quietflex® Mobile Home Flex Duct has an extra heavy-duty, UV-Inhibited, polyethylene-vapor barrier and complies with HUD standards for outdoor use with mobile homes. Standard diameters include 10", 12", 14", 16" and 18" with 25' per bag.

- Bags require 20% less warehouse space
- Weather-resistant
- Up to 10" strapped together to form pairs
- Quick cleanup and easy disposal
- Temperature range is -20 °F to 200 °F intermittent
- Oversized core to fit on collars and register boxes
- Most federal, state and local codes and standards
- Also available in boxes
- Meets UL Standard 181
- ASTM C-518 – Dynamic
- HUD/FHA standards 515.2.1 Paragraph B
- NFPA standards 90A and 90B

Series	R-Value	Diameter					
		8"	10"	12"	14"	16"	18"
51	4.2	X	X	X	X	X	X
71	6.0		X	X	X	X	X
81	8.0		X	X	X	X	X

Customer Service: 877-694-3669

Uninsulated Flex Duct



The Quietflex® Metallic Uninsulated Flex Duct comes in four 25' connectors per carton. Standard diameters are available in 3" to 14" with 100' total.

- Weather-resistant
- Quick cleanup and easy disposal
- Temperature range is -20 °F to 200 °F intermittent
- Oversized core to fit on collars and register boxes
- Most federal, state and local codes and standards
- Meets UL Standard 181
- ASTM C-518 – Dynamic
- HUD/FHA standards 515.2.1 Paragraph B
- NFPA standards 90A and 90B

Series	Diameter									
	3"	4"	5"	6"	7"	8"	9"	10"	12"	14"
06	X	X	X	X	X	X	X	X	X	X

Customer Service: 877-694-3669

Accessories

Limited Warranty

1-Year—Parts from the Date of Installation

Split System Air Conditioners and Heat Pumps

Model	Description	Applicable Units
AFE18-60A	All Fuel Kit	CPLT, CPLJ, CPLE
EH18-60	Emergency Heat Relay Kit	CPLT, CPLJ, CPLE
FP-01	Freeze Protection Kit; for AC Air Handlers	CPLT, CPLJ, CPLE
HLPK-01	High and Low Pressure Switch Kit	CLQ, CLT, CLJ, CKL
HPSK-01	Heat Pump Shut Off Relay; for AC Air Handlers	CPLT, CPLJ, CPLE
LA-01	Low Ambient Kit	CLQ, CLT, CLJ, CKL
LPS-01	Low Pressure Switch	CLQ, CLT, CLJ, CKL
OT18-60A	Outdoor Thermostat Kit	CPLT, CPLJ, CPLE

Gas Furnaces

Model	Description	Applicable Units
CFB17	Downflow Combustible Floor Kit; 17"	GMS9, GCS9, GMV9, GCV9
CFB21	Downflow Combustible Floor Kit; 21"	GMS9, GCS9, GMV9, GCV9
CFB24	Downflow Combustible Floor Kit; 24"	GMS9, GCS9, GMV9, GCV9
DCVK-20	Horizontal/Vertical Concentric Vent Kit (2")	GMS9, GCS9, GMV9, GCV9
DCVK-30	Horizontal/Vertical Concentric Vent Kit (3")	GMS9, GCS9, GMV9, GCV9
DEHUM1	Dehumidistat	GMV9, GCV9
EFR01	External Filter Rack	GMS9, GCS9, GMV9, GCV9
FFK03A	Fossil Fuel Kit	GMS8, GDS8, GHS8, GMV8
GSAS	Electronic Air Cleaner	GMV8, GMV9, GCV9
GMU	Media Air Cleaner	GMV8, GMV9, GCV9
HA02	High Altitude Natural Gas Kit	GMS8, GDS8, GHS8
HALP10	High Altitude Propane Gas Kit	GMS9, GCS9
HALP11	High Altitude Propane Gas Kit	GMV9, GCV9
HANG 13	High Altitude Natural Gas Kit	GMV9, GCV9
HANG 14	High Altitude Natural Gas Kit	GMV9, GCV9
HANG11	High Altitude Natural Gas Kit	GMS9, GCS9
HANG12	High Altitude Natural Gas Kit	GMS9, GCS9
HAPS27	High Altitude Pressure Switch Kit	GMS9, GCS9
HAPS28	High Altitude Pressure Switch Kit	GMV9, GCV9
HAPS29	High Altitude Pressure Gas Kit	GMV9, GCV9
LPLP01	L.P. Low Gas Pressure Kit	GMS9, GCS9
LPM-03	Liquid Propane Conversion Kit	GMV9, GMV8
LPT-00A	Liquid Propane Conversion Kit	GMS9, GMS8, GDS8, GHS8
SBT14	Downflow Combustible Floor Kit; 14"	GMS8, GDS8, GHS8, GMV8
SBT17	Downflow Combustible Floor Kit; 17"	GMS8, GDS8, GHS8, GMV8
SBT21	Downflow Combustible Floor Kit; 21"	GMS8, GDS8, GHS8, GMV8
SBT24	Downflow Combustible Floor Kit; 24"	GMS8, GDS8, GHS8, GMV8

Split System Thermostats

Model	Description	Applicable Units
CH70TG	Cooling/Heating, Digital, Non-Programmable	CLQ, CLT, CRT, CLJ, CKL, CPLT, CPRT, CPLJ, CPLE, GMS9, GCS9, GMV9, GCV9, GMS8, GDS8, GHS8, GMV8, GPG10, GPG12
CHSATG	Cooling/Heating, Mechanical	CLQ, CLT, CRT, CLJ, CKL, CPLT, CPRT, CPLJ, CPLE, GMS9, GCS9, GMV9, GCV9, GMS8, GDS8, GHS8, GMV8, GPG10, GPG12
CHT18-60	Cooling/Heating, Mechanical	CLQ, CLT, CRT, CLJ, CKL, CPLT, CPRT, CPLJ, CPLE, GMS9, GCS9, GMS8, GDS8, GHS8, GMV8, PCKJ, PCK, PHK, PHKJ
CHT90-120	2-stage Cooling/Heating, Mechanical (PG/PC-90/120)	GMV9, GCV9, PCC Commercial, PGC Commercial
CHTP18-60HD	Heat Pump, Digital, Non-Programmable	CPLT, CPRT, CPLJ, CPLE
CT18-60	Cooling Only	CLQ, CLT, CRT, CLJ, CKL
H20TWR	Heating Only	GMS9, GCS9, GMV9, GCV9, GMS8, GDS8, GHS8, GMV8
HPT18-60	Heat Pump	CPLT, CPRT, CPLJ, CPLE
HPTA18-60	Automatic Heat Pump	CPLT, CPRT, CPLJ, CPLE

Packaged Air Conditioners and Heat Pumps

Model	Description
PCCP-1	Curb and Platform Kit
PCCP2-3	Curb and Platform Kit
PCE-1	Fully Modulating Economizer (Slide-in)
PCE2-3	Fully Modulating Economizer (Slide-in)
PCEF-1	Elbow and Flashing Kit
PCEF2-3	Elbow and Flashing Kit
PCMD-1	Manual Damper
PCMD2-3	Manual Damper
PCP-1	Plenum Kit
PCP2-3	Plenum Kit
SQRPC-1	Square to Round Converter (Down Discharge)
SQRPC2-3	Square to Round Converter (Down Discharge)
SQRPCH-1	Square to Round Converter (Horizontal Discharge)
SQRPCH-2	Square to Round Converter (Horizontal Discharge)
SQRPCH-3	Square to Round Converter (Horizontal Discharge)
HK05-1	Slide-in Electric Heat Kit; 5 kW
HK08-1	Slide-in Electric Heat Kit; 8 kW
HK10-1	Slide-in Electric Heat Kit; 10 kW
HK15-1	Slide-in Electric Heat Kit; 15 kW
HK20-1	Slide-in Electric Heat Kit; 20 kW
HK05-3	Slide-in Electric Heat Kit; 5 kW; 3-phase
HK10-3	Slide-in Electric Heat Kit; 10 kW; 3-phase
HK15-3	Slide-in Electric Heat Kit; 15 kW; 3-phase
HK15-4	Slide-in Electric Heat Kit; 15 kW; 3-phase; 460 Volt
HK20-3	Slide-in Electric Heat Kit; 20 kW; 3-phase
HK20-4	Slide-in Electric Heat Kit; 20 kW; 3-phase; 460 Volt
LPAK-00A*	Louver Panel Accessory Kit
LPAK-01A*	Louver Panel Accessory Kit
LPAK-02G*	Louver Panel Accessory Kit, 71 3/4"
LPAK-03A*	Louver Panel Accessory Kit, 77"

Offered by McDaniel Metals • Main: (281) 987-8400 • Fax: (281) 987-9494

* These units are not offered by McDaniel Metals and may be ordered through the Goodman Manufacturing Parts Department.

GPG12 and GPG10 Packaged Gas/Electric Units

Model	Description
PGC101/102/103	Roof Curb
PGED101/102	Downflow Economizer
PGED103	Downflow Economizer
PGEH101/102	Horizontal Economizer
PGEH103	Horizontal Economizer
PGMDD101/102	Manual 25% Fresh Air Damper Downflow Applications
PGMDD103	Manual 25% Fresh Air Damper Downflow Applications
PGMDH101	Manual 25% Fresh Air Damper Horizontal Applications
PGMDH102	Manual 25% Fresh Air Damper Horizontal Applications
PGMDH103	Manual 25% Fresh Air Damper Horizontal Applications
PGMDMD101/102	Motorized 25% Fresh Air Damper Downflow Applications
PGMDMD103	Motorized 25% Fresh Air Damper Downflow Applications
PGMDMH101	Motorized 25% Fresh Air Damper Horizontal Applications
PGMDMH102	Motorized 25% Fresh Air Damper Horizontal Applications
PGMDMH103	Motorized 25% Fresh Air Damper Horizontal Applications
SQRPG101/102	Square to Round Adapter with 16" Round Downflow Applications
SQRPG103	Square to Round Adapter with 18" Round Downflow Applications
PGFR101/102	Internal Filter Rack
LPT-00A	Liquid Propane Conversion Kit

Offered by McDaniel Metals • Main: (281) 987-8400 • Fax: (281) 987-9494

PCC and PGC Commercial Packaged Units

Model	Description
RLK90-120	Rooftop Lift Kit
LA-01	Low Ambient Kit
PGC-5	Roof Curb
PGMD-5	25% Manual Fresh Air Damper
PGMDM-5	25% Motorized Fresh Air Damper
PGED090/102-5*/5A	Downflow Economizer 7½ and 8½ Ton
PGED120/180-5*/5A	Downflow Economizer 10 and 15 Ton
PGEH090/102-5	Horizontal Economizer 7½ and 8½ Ton
PGEH120/180-5	Horizontal Economizer 10 and 15 Ton
PGHDK090/102-5*/5A	Horizontal Duct Kit 7½ and 8½ Ton
PGHDK120/180-5*/5A	Horizontal Duct Kit 10 and 15 Ton
PLK090/102-5	Panel Louver Kit 7½ and 8½ Ton
PLK120/180-5	Panel Louver Kit 10 and 15 Ton
LPW-06**	Liquid Propane Conversion Kit
HKCB20-3*	Slide-in Electric Heat Kit; 20 kW; 3-phase
HKCB30-3*	Slide-in Electric Heat Kit; 30 kW; 3-phase
HKCB40-3*	Slide-in Electric Heat Kit; 40 kW; 3-phase
HKCB20-4*	Slide-in Electric Heat Kit; 20 kW; 460-volt
HKCB30-4*	Slide-in Electric Heat Kit; 30 kW; 460-volt
HKCB40-4*	Slide-in Electric Heat Kit; 40 kW; 460-volt

* For PCC Commercial units only

** For PGC Commercial units only

Air Handlers

Model	Description	Applicable Units
AHKD15-3	15 kW; 3-phase	AR Commercial
AHKD15-4	15 kW; 3-phase; 460-volt	AR Commercial
AHKD20-3	20 kW; 3-phase	AR Commercial
AHKD20-4	20 kW; 3-phase; 460-volt	AR Commercial
AHKD30-3	30 kW; 3-phase	AR Commercial
AHKD30-4	30 kW; 3-phase; 460-volt	AR Commercial
CAP-1	Ceiling Access Panels; 8 Per Carton; Solid	AC, ACHP
CAP-1L	Ceiling Access Panels; 8 Per Carton; Louvered	AC, ACHP
CAP-2	Ceiling Access Panels; 8 Per Carton; Solid	AC, ACHP
CAP-2L	Ceiling Access Panels; 8 Per Carton; Louvered	AC, ACHP
CAP-3	Ceiling Access Panels; 8 Per Carton; Solid	AC, ACHP
CAP-3L	Ceiling Access Panels; 8 Per Carton; Louvered	AC, ACHP
DPI18-30/20	Coil Insulation Kit; Small Chassis (Downflow Applications)	AEPT, ARPT, ARUF
DPI36-42/20	Coil Insulation Kit; Medium Chassis (Downflow Applications)	AEPT, ARPT, ARUF
DPI48-60/20	Coil Insulation Kit; Large Chassis (Downflow Applications)	AEPT, ARPT, ARUF
FIL18-32	Washable Air Filter	AEPT, ARPT, ARPF, ARUF
FIL18-32	Washable Air Filter	AR Commercial
FIL36-42	Washable Air Filter	AEPT, ARPT, ARPF, ARUF
FIL36-42	Washable Air Filter	AR Commercial
FIL48-61	Washable Air Filter	AEPT, ARPT, ARPF, ARUF
FIL48-61	Washable Air Filter	AR Commercial
HKR-03	Heat Kit	ARPT, ARPF, ARUF
HKR-05(C)	Heat Kit (Circuit Breakers Optional)	AEPT, ARPT, ARPF, ARUF
HKR-06	Heat Kit	ARPT, ARPF, ARUF
HKR-08(C)	Heat Kit (Circuit Breakers Optional)	AEPT, ARPT, ARPF, ARUF
HKR-10(C)	Heat Kit (Circuit Breakers Optional)	AEPT, ARPT, ARPF, ARUF
HKR-15(C)	Heat Kit (Circuit Breakers Optional)	AEPT, ARPT, ARPF, ARUF
HKR-20(C)	Heat Kit (Circuit Breakers Optional)	AEPT, ARPT, ARPF, ARUF
HKR-21(C)	Heat Kit (Circuit Breakers Optional)	AEPT, ARPT, ARPF, ARUF
HKR3-15	Heat Kit (3-phase Applications)	ARPT, ARPF, ARUF
HKR3-20	Heat Kit (3-phase Applications)	ARPT, ARPF, ARUF
WAD-1	Wall Access Doors; 8 Per Carton	AH, AWB
WAD-2	Wall Access Doors; 8 Per Carton	AH, AWB
WCK-01	Water Circulator Timer Kit	AH, ACHP
XV18-36C	Expansion Valve Kit; Non-bleed valve (Air Conditioning Only Applications)	ARPF/ARUF18-36
XV42-60C	Expansion Valve Kit; Non-bleed valve (Air Conditioning Only Applications)	ARPF/ARUF42-60
XVB18-36C	Expansion Valve Kit; 20% bleed valve (Air Conditioning Only Applications)	ARPF/ARUF18-36
XVB42-60C	Expansion Valve Kit; 20% bleed valve (Air Conditioning Only Applications)	ARPF/ARUF42-60

Coils

Model	Description	Applicable Units
TX3N2	Expansion Valve Kit, Non-bleed, Field-installed for 1½ through 3-ton R-22 air conditioners and heat pumps	CAPF, CHPF
TX5N2	Expansion Valve Kit, Non-bleed, Field-installed for 3½ through 5-ton R-22 air conditioners and heat pumps	CAPF, CHPF
XV18-36C	Expansion Valve Kit, Non-bleed	CLQ, CLT, CRT, CLJ, CKL
XV42-60C	Expansion Valve Kit, Non-bleed	CLQ, CLT, CRT, CLJ, CKL
XVB18-36C	Expansion Valve Kit, 20% bleed	CLQ, CLT, CRT, CLJ, CKL
XVB42-60C	Expansion Valve Kit, 20% bleed	CLQ, CLT, CRT, CLJ, CKL

Goodman Manufacturing Company, L.P., reserves the right to discontinue, or change at any time, specifications or designs without notice or without incurring obligations.

Quietflex[®] is a registered trademark of Quietflex Manufacturing Company, L.P.

Copyright © 2005 Goodman Manufacturing Company, L.P.

Houston, Texas

Printed in USA

Form No. PRODCAT-01D

Goodman[®] brand products are made proudly in the USA.

www.goodmanmfg.com



Air Conditioning & Heating

Goodman Family of Brands



Air Conditioning & Heating

© 2005 Goodman Manufacturing Company, L.P. · Houston, Texas · www.goodmanmfg.com